



TOURIST ACCOMMODATION AUSTRALIA

EMBARGO: 11:30AM (CANBERRA TIME) FRI 20 DEC 2002

SEPTEMBER QTR KEY FIGURES

LICENSED HOTELS	Sep Qtr 2001	Sep Qtr 2002	change
Rooms available (no.)	78 241	77 603	-0.8 %
Room nights occupied ('000)	4 506	4 470	-0.8 %
Room occupancy rate (%)	62.6	62.7	0.1 pts
Takings from accommodation (\$'000)	628 608	609 027	-3.1 %
Takings per room night occupied (\$)	139.5	136.3	-3.2 \$

MOTELS AND GUEST HOUSES

Rooms available (no.)	84 021	83 724	-0.4 %
Room nights occupied ('000)	4 113	4 159	1.1 %
Room occupancy rate (%)	53.2	54.0	0.8 pts
Takings from accommodation (\$'000)	365 585	372 709	1.9 %
Takings per room night occupied (\$)	88.9	89.6	0.7 \$

SERVICED APARTMENTS

Rooms available (no.)	34 467	35 661	3.5 %
Room nights occupied ('000)	2 000	2 159	7.9 %
Room occupancy rate (%)	63.1	65.9	2.8 pts
Takings from accommodation (\$'000)	232 329	256 601	10.4 %
Takings per room night occupied (\$)	116.2	118.9	2.7 \$

SEPTEMBER QTR KEY POINTS

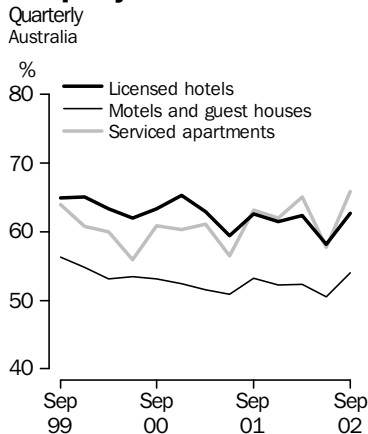
TOURIST ACCOMMODATION REMAINS FLAT

- Total accommodation takings for licensed hotels, motels and guest houses and serviced apartments were \$1,238m in the September quarter 2002, an increase of just under 1% compared with the September quarter 2001. There were 10,787 room nights occupied, an increase of 1.6% over the same quarter in the previous year.
- Accommodation takings for serviced apartments increased by 10.4%, takings for motels and guest houses increased by 1.9%, while those for licensed hotels decreased by 3.1%. The strong takings growth in the serviced apartments sector, was reflected in room nights occupied, which increased by 7.9% in the September quarter 2002 compared with the September quarter 2001. Room nights occupied in motels and guest houses increased by 1.1%, while those in licensed hotels decreased by 0.8% over the same period.

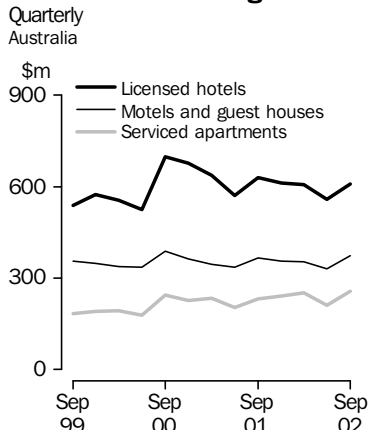
SMALLER STATES DEFY THE TREND

- The smaller states showed increases well above the national average for both accommodation takings and room nights occupied. South Australia recorded the largest growth in total takings from accommodation between the 2001 and 2002 September quarters with an increase of 8.7%, while room nights occupied increased by 6.5%. Accommodation takings in Tasmania were up 8.0%, with room nights occupied recording an even stronger growth of 9.3%. Western Australia recorded increases of 7.8% and 4.4% respectively.

Occupancy rates



Accommodation takings



- For further information about these and related statistics, contact the National Information and Referral Service on 1300 135 070 or Neil McKellar-Stewart on Brisbane 07 3222 6364.

NOTES

FORTHCOMING ISSUES

<i>ISSUE</i>	<i>RELEASE DATE</i>
December Quarter 2002	21 March 2003
March Quarter 2003	20 June 2003

INTRODUCTION

This publication contains the results of the quarterly Survey of Tourist Accommodation (STA). The STA includes hotels, motels, guest houses and serviced apartments with 15 or more rooms.

SYMBOLS AND OTHER

USAGES

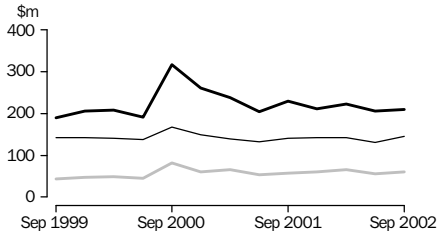
n.a.	not available
n.p.	not available for publication but included in totals where applicable
pts	percentage points change
r	revised
..	not applicable
—	nil or rounded to zero

Dennis Trewin
Australian Statistician

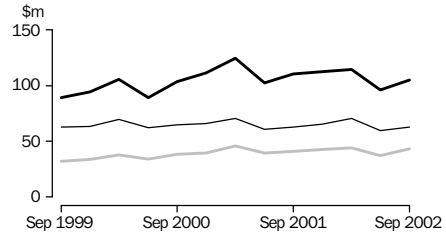
ACCOMMODATION TAKINGS

Licensed hotels
 Motels and guest houses
 Serviced apartments

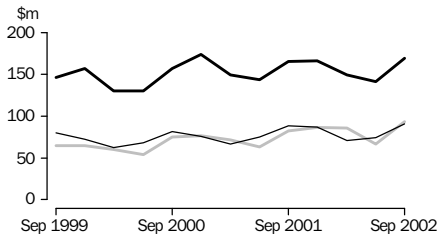
NEW SOUTH WALES



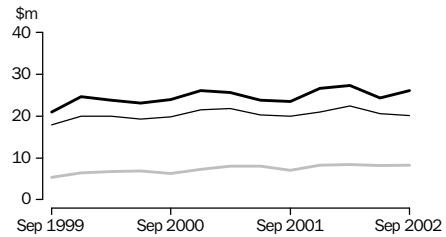
VICTORIA



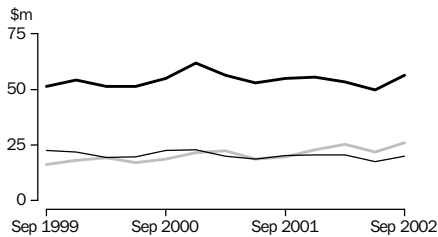
QUEENSLAND



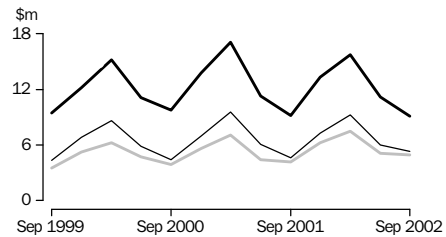
SOUTH AUSTRALIA



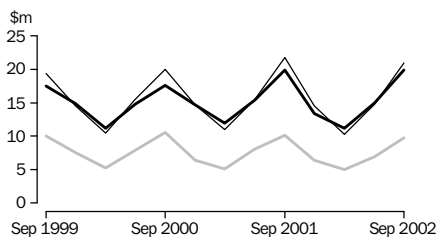
WESTERN AUSTRALIA



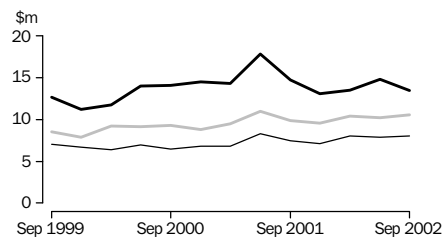
TASMANIA



NORTHERN TERRITORY



AUSTRALIAN CAPITAL TERRITORY



LIST OF TABLES

Page

1	Summary of hotels, motels, guest houses and serviced apartments	5
	Hotels, motels, guest houses and serviced apartments, by star grading	
2	Australia	6
3	New South Wales	8
4	Victoria	10
5	Queensland	12
6	South Australia	14
7	Western Australia	16
8	Tasmania	18
9	Northern Territory	20
10	Australian Capital Territory	22
	Hotels, motels, guest houses and serviced apartments, by tourism region	
11	New South Wales	24
12	Victoria	26
13	Queensland	28
14	South Australia	30
15	Western Australia	31
16	Tasmania	32
17	Northern Territory and Australian Capital Territory	33

1

SUMMARY OF HOTELS, MOTELS, GUEST HOUSES AND SERVICED APARTMENTS (a)—Australia

<i>Period</i>	<i>Establishments</i> no.	<i>Guest rooms</i> no.	<i>Bed spaces</i> no.	<i>Persons employed</i> no.	<i>Room nights occupied</i> '000	<i>Room occupancy rate</i> %	<i>Guest nights</i> '000	<i>Bed occupancy rate</i> %	<i>Guest arrivals</i> '000	<i>Average length of stay</i> days	<i>Takings from accommodation</i> \$'000
LICENSED HOTELS WITH FACILITIES											
2001											
June quarter	778	78 050	205 656	72 226	4 212	59.3	6 854	36.6	2 984	2.3	569 936
September quarter	776	78 241	205 546	71 620	4 506	62.6	7 509	39.7	3 175	2.4	628 608
December quarter	781	78 574	206 592	70 663	4 437	61.5	7 426	39.1	3 139	2.4	611 507
2002											
March quarter	781	78 163	203 474	69 888	4 390	62.4	7 355	40.2	3 094	2.4	607 768
June quarter	776	78 183	204 368	69 872	4 138	58.2	6 657	35.8	2 957	2.3	557 622
September quarter	780	77 603	203 531	69 923	4 470	62.7	7 439	39.8	3 218	2.3	609 027
Year ended September 2001	17 712	62.5	29 226	39.1	12 302	2.4	2 512 891
Year ended September 2002	17 436	61.2	28 876	38.7	12 408	2.3	2 385 924
MOTELS AND GUEST HOUSES WITH FACILITIES											
2001											
June quarter	2 398	84 093	247 928	29 368	3 894	50.9	6 746	29.9	3 788	1.8	336 607
September quarter	2 394	84 021	246 834	29 740	4 113	53.2	7 313	32.2	4 076	1.8	365 585
December quarter	2 400	84 430	247 776	29 288	4 055	52.2	7 187	31.6	4 079	1.8	355 294
2002											
March quarter	2 401	84 284	246 608	29 123	3 968	52.3	7 158	32.3	3 942	1.8	354 023
June quarter	2 382	83 558	244 723	28 733	3 843	50.5	6 594	29.6	3 760	1.8	331 210
September quarter	2 391	83 724	244 882	29 584	4 159	54.0	7 321	32.5	4 151	1.8	372 709
Year ended September 2001	15 997	52.0	28 207	31.1	15 675	1.8	1 411 418
Year ended September 2002	16 025	52.3	28 260	31.5	15 931	1.8	1 413 235
SERVICED APARTMENTS											
2001											
June quarter	649	34 401	114 636	11 532	1 767	56.4	3 752	36.0	1 071	3.5	204 794
September quarter	646	34 467	114 391	11 459	2 000	63.1	4 361	41.4	1 175	3.7	232 329
December quarter	657	35 129	117 192	11 799	2 003	62.0	4 498	41.7	1 225	3.7	242 753
2002											
March quarter	668	35 412	117 872	11 808	2 070	65.0	4 659	44.0	1 248	3.7	252 201
June quarter	668	35 113	116 329	11 565	1 842	57.7	3 854	36.4	1 120	3.4	211 243
September quarter	676	35 661	117 835	12 158	2 159	65.9	4 682	43.3	1 261	3.7	256 601
Year ended September 2001	7 515	60.2	16 335	39.1	4 531	3.6	898 748
Year ended September 2002	8 075	62.7	17 693	41.4	4 854	3.6	962 798
TOTAL ESTABLISHMENTS											
2001											
June quarter	3 825	196 544	568 220	113 126	9 873	55.2	17 352	33.6	7 843	2.2	1 111 337
September quarter	3 816	196 729	566 771	112 819	10 619	58.7	19 182	36.8	8 427	2.3	1 226 522
December quarter	3 838	198 133	571 560	111 750	10 496	57.6	19 111	36.4	8 444	2.3	1 209 554
2002											
March quarter	3 850	197 859	567 954	110 819	10 428	58.6	19 171	37.5	8 283	2.3	1 213 991
June quarter	3 826	196 854	565 420	110 170	9 824	54.8	17 105	33.2	7 836	2.2	1 100 074
September quarter	3 847	196 988	566 248	111 665	10 787	59.6	19 442	37.4	8 630	2.3	1 238 337
Year ended September 2001	41 223	57.6	73 768	35.6	32 508	2.3	4 823 057
Year ended September 2002	41 535	57.7	74 829	36.1	33 193	2.3	4 761 957

(a) Comprising establishments with 15 or more rooms or units. See Explanatory Notes, paragraph 7.

STAR GRADING

Period	Licensed	Motels	Serviced	STAR GRADING					Ungraded	Total
	hotels with facilities	and guest houses	apartments	1	2	3	4	5		
ESTABLISHMENTS, CAPACITY AND EMPLOYMENT (number)										
September quarter 2001										
Establishments	776	2 394	646	61	455	1 867	903	98	432	3 816
Guest rooms	78 241	84 021	34 467	1 962	13 280	71 330	71 687	23 552	14 918	196 729
Bed spaces	205 546	246 834	114 391	6 315	39 027	211 414	206 584	59 879	43 552	566 771
Persons employed	71 620	29 740	11 459	831	5 269	27 098	38 889	34 678	6 054	112 819
September quarter 2002										
Establishments	780	2 391	676	62	449	1 848	955	109	424	3 847
Guest rooms	77 603	83 724	35 661	2 207	13 305	69 176	72 863	24 670	14 767	196 988
Bed spaces	203 531	244 882	117 835	6 991	39 335	203 724	209 007	63 775	43 416	566 248
Persons employed	69 923	29 584	12 158	803	5 245	26 035	38 514	34 316	6 752	111 665
ROOM NIGHTS OCCUPIED ('000)										
2001										
September quarter	4 506.3	4 112.6	2 000.1	77.8	542.0	3 612.0	4 262.7	1 434.2	690.4	10 619.0
2002										
July	1 457.9	1 404.9	728.7	32.1	200.5	1 171.5	1 462.7	481.1	243.6	3 591.5
August	1 544.6	1 362.9	718.0	34.3	188.7	1 147.1	1 494.0	521.3	240.0	3 625.4
September	1 467.5	1 391.0	712.0	28.4	189.1	1 168.3	1 462.2	487.6	234.8	3 570.4
September quarter	4 469.9	4 158.8	2 158.7	94.8	578.3	3 486.9	4 418.9	1 490.0	718.5	10 787.3
ROOM OCCUPANCY RATES (%)										
2001										
September quarter	62.6	53.2	63.1	43.1	44.4	55.0	64.6	66.2	50.4	58.7
2002										
July	60.7	54.2	66.2	46.9	48.8	54.6	64.8	62.9	54.0	58.9
August	64.3	52.5	65.0	50.1	45.9	53.5	66.3	68.2	52.6	59.4
September	63.2	55.4	66.6	42.9	47.4	56.3	67.0	65.9	53.1	60.5
September quarter	62.7	54.0	65.9	46.7	47.4	54.8	66.0	65.6	53.2	59.6
GUEST NIGHTS ('000)										
2001										
September quarter	7 508.5	7 312.8	4 360.8	160.0	978.3	6 725.0	7 633.7	2 375.1	1 310.1	19 182.2
2002										
July	2 471.2	2 521.4	1 623.8	69.6	364.6	2 204.5	2 684.6	813.5	479.6	6 616.4
August	2 560.5	2 351.8	1 513.3	75.9	327.7	2 069.8	2 634.4	857.3	460.5	6 425.6
September	2 407.3	2 447.8	1 545.0	52.5	339.8	2 139.5	2 609.1	806.1	453.1	6 400.1
September quarter	7 438.9	7 321.1	4 682.1	198.0	1 032.2	6 413.8	7 928.2	2 476.9	1 393.1	19 442.1
BED OCCUPANCY RATES (%)										
2001										
September quarter	39.7	32.2	41.4	27.5	27.3	34.6	40.2	43.1	32.7	36.8
2002										
July	39.2	33.3	44.6	32.1	30.0	34.9	41.5	41.1	36.0	37.8
August	40.7	31.0	41.5	35.0	27.0	32.8	40.7	43.4	34.3	36.6
September	39.5	33.3	43.7	25.0	28.8	35.0	41.7	42.1	34.8	37.7
September quarter	39.8	32.5	43.3	30.8	28.6	34.2	41.3	42.2	35.1	37.4

(a) Comprising establishments with 15 or more rooms or units. See Explanatory Notes, paragraph 7.

STAR GRADING

Period	Licensed hotels with facilities	Motels and guest houses	Serviced apartments	1	2	3	4	5	Ungraded	Total
GUEST ARRIVALS ('000)										
2001										
September quarter	3 175.5	4 076.2	1 175.5	73.3	563.6	3 333.4	3 067.8	908.8	480.2	8 427.1
2002										
July	1 057.4	1 420.3	423.6	36.9	205.7	1 123.1	1 051.4	312.7	171.5	2 901.3
August	1 111.0	1 330.9	409.2	36.5	187.2	1 058.6	1 065.8	332.9	170.1	2 851.1
September	1 049.3	1 399.4	428.6	31.2	193.0	1 114.8	1 055.3	313.8	169.2	2 877.4
September quarter	3 217.7	4 150.7	1 261.4	104.7	585.9	3 296.5	3 172.5	959.4	510.9	8 629.8
AVERAGE LENGTH OF STAY (days)										
2001										
September quarter	2.4	1.8	3.7	2.2	1.7	2.0	2.5	2.6	2.7	2.3
2002										
September quarter	2.3	1.8	3.7	1.9	1.8	1.9	2.5	2.6	2.7	2.3
TAKINGS FROM ACCOMMODATION (\$'000)										
2001										
September quarter	628 608	365 585	232 329	5 976	37 033	325 534	523 271	266 745	67 963	1 226 522
2002										
July	196 816	126 445	86 393	2 502	13 698	106 834	177 314	84 270	25 035	409 654
August	213 014	123 387	85 252	2 906	12 944	105 073	182 084	93 149	25 496	421 653
September	199 197	122 877	84 956	1 887	12 757	103 650	178 125	87 647	22 965	407 030
September quarter	609 027	372 709	256 601	7 295	39 400	315 557	537 522	265 067	73 496	1 238 337
AVERAGE TAKINGS PER ROOM NIGHT OCCUPIED (\$)										
2001										
September quarter	139.5	88.9	116.2	76.8	68.3	90.1	122.8	186.0	98.4	115.5
2002										
July	135.0	90.0	118.6	78.0	68.3	91.2	121.2	175.2	102.8	114.1
August	137.9	90.5	118.7	84.8	68.6	91.6	121.9	178.7	106.2	116.3
September	135.7	88.3	119.3	66.5	67.4	88.7	121.8	179.8	97.8	114.0
September quarter	136.3	89.6	118.9	77.0	68.1	90.5	121.6	177.9	102.3	114.8
AVERAGE TAKINGS PER AVAILABLE ROOM NIGHT (\$)										
2001										
September quarter	87.3	47.3	73.3	33.1	30.3	49.6	79.3	123.1	49.6	67.8
2002										
July	81.9	48.8	78.4	36.6	33.3	49.8	78.6	110.2	55.4	67.2
August	88.7	47.5	77.2	42.5	31.5	49.0	80.8	121.8	55.8	69.1
September	85.7	48.9	79.4	28.5	32.0	50.0	81.6	118.4	51.9	68.9
September quarter	85.5	48.4	78.4	35.9	32.3	49.6	80.3	116.8	54.4	68.4

(a) Comprising establishments with 15 or more rooms or units. See Explanatory Notes, paragraph 7.

STAR GRADING

<i>Period</i>	<i>Licensed hotels with facilities</i>	<i>Motels and guest houses</i>	<i>Serviced apartments</i>	1	2	3	4	5	<i>Ungraded</i>	<i>Total</i>
ESTABLISHMENTS, CAPACITY AND EMPLOYMENT (number)										
September quarter 2001										
Establishments	199	991	134	30	177	707	221	26	163	1 324
Guest rooms	25 028	32 787	7 600	1 145	5 139	25 882	21 107	6 876	5 266	65 415
Bed spaces	61 871	96 848	24 502	4 137	15 120	75 527	57 447	15 209	15 781	183 221
Persons employed	20 494	11 465	2 709	384	1 751	9 022	12 119	9 516	1 876	34 668
September quarter 2002										
Establishments	195	987	132	31	179	693	235	25	151	1 314
Guest rooms	23 750	32 352	7 477	1 214	5 230	24 591	21 006	6 701	4 837	63 579
Bed spaces	58 738	95 317	23 738	4 340	15 485	71 247	56 935	15 162	14 624	177 793
Persons employed	19 618	11 262	2 757	365	1 743	8 444	11 965	9 180	1 940	33 637
ROOM NIGHTS OCCUPIED ('000)										
2001										
September quarter	1 481.2	1 540.3	407.7	47.2	218.3	1 298.4	1 250.6	398.8	215.9	3 429.2
2002										
July	467.0	530.4	148.6	17.9	79.5	416.4	430.7	121.0	80.5	1 146.0
August	492.0	507.4	144.5	19.8	74.7	403.6	429.9	138.9	77.0	1 143.9
September	449.7	532.9	142.3	13.8	77.2	415.9	419.5	126.5	71.9	1 124.9
September quarter	1 408.7	1 570.7	435.3	51.5	231.4	1 235.9	1 280.1	386.4	229.4	3 414.8
ROOM OCCUPANCY RATES (%)										
2001										
September quarter	64.4	51.1	58.3	44.8	46.2	54.5	64.4	63.0	44.7	57.0
2002										
July	63.4	52.9	64.1	47.6	49.0	54.6	66.1	58.2	53.7	58.1
August	67.0	50.6	62.3	52.5	46.1	52.9	66.3	66.9	51.4	58.1
September	63.4	54.9	63.4	38.0	49.4	56.4	66.8	62.9	49.6	59.1
September quarter	64.6	52.8	63.3	46.1	48.1	54.6	66.4	62.7	51.6	58.4
GUEST NIGHTS ('000)										
2001										
September quarter	2 468.5	2 763.8	814.9	108.4	400.4	2 396.3	2 083.8	640.4	417.9	6 047.2
2002										
July	787.4	975.4	316.0	45.1	147.8	782.5	740.7	195.3	167.4	2 078.8
August	828.4	885.6	290.6	50.8	130.6	720.2	719.6	224.1	159.3	2 004.6
September	715.9	952.4	286.0	27.5	138.0	752.1	696.5	197.9	142.3	1 954.3
September quarter	2 331.6	2 813.5	892.6	123.3	416.4	2 254.8	2 156.8	617.3	469.0	6 037.6
BED OCCUPANCY RATES (%)										
2001										
September quarter	43.4	31.0	36.1	28.5	28.8	34.5	39.4	45.8	28.9	35.9
2002										
July	43.2	33.0	42.9	33.5	30.8	35.4	42.0	41.6	36.9	37.7
August	45.7	30.0	39.5	37.7	27.2	32.6	40.9	47.7	35.1	36.4
September	40.8	33.3	40.2	21.1	29.8	35.2	40.9	43.5	32.4	36.7
September quarter	43.3	32.1	40.9	30.9	29.3	34.4	41.3	44.3	34.9	36.9

(a) Comprising establishments with 15 or more rooms or units. See Explanatory Notes, paragraph 7.

STAR GRADING

Period	Licensed hotels with facilities	Motels and guest houses	Serviced apartments	1	2	3	4	5	Ungraded	Total
GUEST ARRIVALS ('000)										
2001										
September quarter	960.1	1 673.9	253.5	44.1	239.4	1 306.4	898.8	231.3	167.3	2 887.5
2002										
July	329.1	606.0	100.3	20.6	89.5	449.8	324.4	85.4	65.7	1 035.4
August	343.9	552.6	93.5	19.9	80.4	413.7	317.7	95.8	62.4	989.9
September	310.1	596.8	96.7	15.1	85.1	443.0	315.5	86.3	58.6	1 003.6
September quarter	983.0	1 755.4	290.4	55.6	255.0	1 306.5	957.5	267.6	186.7	3 028.9
AVERAGE LENGTH OF STAY (days)										
2001										
September quarter	2.6	1.7	3.2	2.5	1.7	1.8	2.3	2.8	2.5	2.1
2002										
September quarter	2.4	1.6	3.1	2.2	1.6	1.7	2.3	2.3	2.5	2.0
TAKINGS FROM ACCOMMODATION (\$'000)										
2001										
September quarter	230 109	140 699	57 846	4 140	15 144	122 323	170 458	92 830	23 759	428 654
2002										
July	69 278	49 136	20 571	1 713	5 527	39 533	57 805	24 779	9 628	138 985
August	74 376	47 293	20 326	2 084	5 259	38 530	57 736	28 447	9 940	141 996
September	66 245	48 185	19 587	1 055	5 149	37 962	56 265	26 204	7 382	134 017
September quarter	209 899	144 614	60 485	4 852	15 935	116 025	171 806	79 430	26 950	414 998
AVERAGE TAKINGS PER ROOM NIGHT OCCUPIED (\$)										
2001										
September quarter	155.4	91.3	141.9	87.7	69.4	94.2	136.3	232.8	110.0	125.0
2002										
July	148.4	92.6	138.4	95.7	69.5	94.9	134.2	204.8	119.7	121.3
August	151.2	93.2	140.7	105.4	70.4	95.5	134.3	204.8	129.0	124.1
September	147.3	90.4	137.7	76.3	66.7	91.3	134.1	207.2	102.6	119.1
September quarter	149.0	92.1	138.9	94.2	68.9	93.9	134.2	205.6	117.5	121.5
AVERAGE TAKINGS PER AVAILABLE ROOM NIGHT (\$)										
2001										
September quarter	100.0	46.6	82.7	39.3	32.0	51.4	87.8	146.7	49.2	71.2
2002										
July	94.1	49.0	88.8	45.5	34.1	51.9	88.8	119.3	64.2	70.5
August	101.4	47.2	87.7	55.4	32.4	50.5	89.0	136.9	66.3	72.1
September	93.3	49.6	87.3	29.0	32.9	51.5	89.6	130.4	50.9	70.4
September quarter	96.3	48.6	87.9	43.4	33.2	51.3	89.1	128.8	60.6	71.0

(a) Comprising establishments with 15 or more rooms or units. See Explanatory Notes, paragraph 7.

4

HOTELS, MOTELS, GUEST HOUSES AND SERVICED APARTMENTS (a)—Vic.

STAR GRADING

<i>Period</i>	<i>Licensed hotels with facilities</i>	<i>Motels and guest houses</i>	<i>Serviced apartments</i>	1	2	3	4	5	<i>Ungraded</i>	<i>Total</i>
ESTABLISHMENTS, CAPACITY AND EMPLOYMENT (number)										
September quarter 2001										
Establishments	129	495	83	8	67	369	201	20	42	707
Guest rooms	12 239	15 422	4 613	259	1 735	11 608	12 814	4 186	1 672	32 274
Bed spaces	28 730	44 514	14 154	732	5 263	33 220	33 914	9 223	5 046	87 398
Persons employed	14 630	5 592	1 789	85	705	4 356	6 728	9 273	864	22 011
September quarter 2002										
Establishments	132	494	89	8	64	372	206	21	44	715
Guest rooms	12 576	15 520	5 088	313	1 676	11 804	13 151	4 217	2 023	33 184
Bed spaces	30 160	44 804	15 269	907	5 137	33 630	35 179	9 395	5 985	90 233
Persons employed	14 258	5 427	1 780	110	688	4 234	6 383	8 963	1 087	21 465
ROOM NIGHTS OCCUPIED ('000)										
2001										
September quarter	716.0	644.5	288.7	9.9	44.0	518.5	731.2	263.0	82.6	1 649.2
2002										
July	222.6	221.7	105.4	4.8	15.8	174.7	238.8	81.2	34.3	549.6
August	250.1	217.0	105.8	5.0	15.4	169.1	253.9	94.3	35.1	572.8
September	232.2	216.5	101.5	5.3	15.2	167.2	241.7	87.3	33.6	550.2
September quarter	704.8	655.2	312.7	15.0	46.4	511.1	734.4	262.8	103.0	1 672.6
ROOM OCCUPANCY RATES (%)										
2001										
September quarter	63.6	45.4	68.0	41.8	27.6	48.5	62.0	68.3	53.7	55.5
2002										
July	57.2	46.1	67.5	49.3	31.1	47.8	58.8	62.1	54.7	53.6
August	64.3	45.1	67.7	51.4	30.2	46.2	62.5	72.1	56.1	55.8
September	61.6	46.6	66.6	56.1	30.2	47.3	61.3	69.0	55.4	55.3
September quarter	61.0	45.9	67.3	52.2	30.5	47.1	60.9	67.7	55.4	54.9
GUEST NIGHTS ('000)										
2001										
September quarter	1 104.3	1 139.3	553.6	16.5	82.5	959.5	1 203.1	382.3	153.4	2 797.1
2002										
July	348.9	397.8	206.3	8.2	29.6	325.9	403.2	121.3	64.8	952.9
August	384.2	375.9	199.0	8.5	29.0	306.7	411.8	138.0	65.1	959.1
September	352.8	377.0	190.8	8.9	28.5	298.7	390.5	131.2	62.7	920.6
September quarter	1 085.9	1 150.7	596.1	25.7	87.1	931.3	1 205.5	390.5	192.6	2 832.7
BED OCCUPANCY RATES (%)										
2001										
September quarter	41.8	27.8	42.5	24.4	17.0	31.4	38.6	45.0	33.0	34.8
2002										
July	37.4	28.6	44.1	29.2	18.9	31.3	37.2	41.6	35.0	34.2
August	41.2	27.1	42.4	30.2	18.6	29.4	37.9	47.4	35.1	34.4
September	39.0	28.1	41.7	32.8	18.5	29.7	37.0	46.5	35.0	34.1
September quarter	39.2	27.9	42.7	30.7	18.7	30.1	37.4	45.2	35.0	34.2

(a) Comprising establishments with 15 or more rooms or units. See Explanatory Notes, paragraph 7.

4

HOTELS, MOTELS, GUEST HOUSES AND SERVICED APARTMENTS (a)—Vic. *continued*

STAR GRADING

Period	Licensed hotels with facilities	Motels and guest houses	Serviced apartments	1	2	3	4	5	Ungraded	Total
GUEST ARRIVALS ('000)										
2001										
September quarter	541.3	650.5	174.7	12.8	48.6	493.6	578.1	177.1	56.4	1 366.5
2002										
July	180.2	228.4	57.1	7.6	17.2	168.7	197.4	55.4	19.3	465.7
August	197.1	216.2	57.6	7.8	16.5	160.1	204.9	61.0	20.4	470.8
September	176.1	222.8	54.6	7.6	16.7	160.2	194.4	55.9	18.7	453.5
September quarter	553.4	667.4	169.3	22.9	50.5	489.0	596.8	172.4	58.5	1 390.0
AVERAGE LENGTH OF STAY (days)										
2001										
September quarter	2.0	1.8	3.2	1.3	1.7	1.9	2.1	2.2	2.7	2.0
2002										
September quarter	2.0	1.7	3.5	1.1	1.7	1.9	2.0	2.3	3.3	2.0
TAKINGS FROM ACCOMMODATION (\$'000)										
2001										
September quarter	110 292	62 515	41 335	630	2 917	49 145	96 361	53 415	11 674	214 141
2002										
July	32 572	21 467	14 277	268	1 079	16 625	30 410	15 725	4 209	68 317
August	37 536	21 326	14 611	273	1 105	16 604	32 494	18 533	4 464	73 473
September	35 033	20 122	14 096	309	1 056	14 951	31 040	17 681	4 214	69 251
September quarter	105 142	62 915	42 984	851	3 239	48 179	93 944	51 939	12 887	211 041
AVERAGE TAKINGS PER ROOM NIGHT OCCUPIED (\$)										
2001										
September quarter	154.0	97.0	143.2	63.4	66.3	94.8	131.8	203.1	141.3	129.8
2002										
July	146.4	96.8	135.5	56.1	68.1	95.1	127.3	193.8	122.8	124.3
August	150.1	98.3	138.1	54.8	71.8	98.2	128.0	196.5	127.2	128.3
September	150.9	92.9	138.9	58.7	69.5	89.4	128.4	202.5	125.5	125.9
September quarter	149.2	96.0	137.5	56.6	69.8	94.3	127.9	197.7	125.2	126.2
AVERAGE TAKINGS PER AVAILABLE ROOM NIGHT (\$)										
2001										
September quarter	98.0	44.1	97.4	26.5	18.3	46.0	81.7	138.7	75.9	72.1
2002										
July	83.8	44.6	91.5	27.7	21.2	45.4	74.9	120.3	67.2	66.6
August	96.6	44.3	93.5	28.2	21.7	45.4	80.0	141.8	71.4	71.6
September	92.9	43.3	92.5	32.9	21.0	42.3	78.7	139.8	69.6	69.6
September quarter	91.1	44.1	92.5	29.6	21.3	44.4	77.9	133.9	69.4	69.3

(a) Comprising establishments with 15 or more rooms or units. See Explanatory Notes, paragraph 7.

STAR GRADING

<i>Period</i>	<i>Licensed hotels with facilities</i>	<i>Motels and guest houses</i>	<i>Serviced apartments</i>	1	2	3	4	5	<i>Ungraded</i>	<i>Total</i>
ESTABLISHMENTS, CAPACITY AND EMPLOYMENT (number)										
September quarter 2001										
Establishments	167	513	272	9	96	415	297	32	103	952
Guest rooms	20 708	18 392	13 496	208	2 417	15 327	22 729	8 093	3 822	52 596
Bed spaces	62 924	54 394	46 232	572	7 359	48 649	70 605	24 732	11 633	163 550
Persons employed	20 343	6 498	3 956	97	1 108	5 881	10 961	11 397	1 353	30 797
September quarter 2002										
Establishments	170	508	286	9	95	411	317	37	95	964
Guest rooms	20 753	18 188	13 687	282	2 571	14 684	22 973	8 666	3 452	52 628
Bed spaces	62 152	53 163	46 680	768	7 876	45 925	70 479	26 439	10 508	161 995
Persons employed	20 255	6 459	4 315	96	1 107	5 641	11 123	11 611	1 451	31 029
ROOM NIGHTS OCCUPIED ('000)										
2001										
September quarter	1 240.7	1 085.3	829.8	8.7	108.4	908.5	1 411.8	499.0	219.2	3 155.7
2002										
July	420.5	379.1	294.9	4.8	46.6	299.1	498.8	175.4	69.9	1 094.6
August	429.1	363.9	295.7	4.8	41.7	291.8	504.0	176.6	69.7	1 088.6
September	408.8	347.7	290.4	4.9	40.0	282.3	485.7	167.2	67.0	1 047.0
September quarter	1 258.5	1 090.7	881.1	14.5	128.2	873.2	1 488.5	519.2	206.6	3 230.2
ROOM OCCUPANCY RATES (%)										
2001										
September quarter	65.1	64.1	66.8	45.6	48.7	64.4	67.5	67.0	62.3	65.2
2002										
July	65.4	67.2	69.5	55.1	58.4	65.7	70.0	65.3	65.3	67.1
August	66.7	64.5	69.7	54.8	52.3	64.1	70.8	65.7	65.2	66.7
September	65.8	63.7	70.7	58.0	51.8	64.3	70.5	64.3	64.7	66.4
September quarter	66.0	65.2	70.0	56.0	54.2	64.7	70.4	65.1	65.1	66.7
GUEST NIGHTS ('000)										
2001										
September quarter	2 310.2	1 960.7	2 032.8	16.7	195.2	1 799.2	2 908.2	940.7	443.6	6 303.7
2002										
July	793.4	674.7	715.9	7.6	85.6	583.1	1 033.2	330.9	143.7	2 184.0
August	786.2	638.5	681.5	7.5	74.5	558.1	1 004.6	324.4	137.0	2 106.2
September	764.2	617.4	699.3	7.8	74.7	552.6	993.8	313.0	139.1	2 080.9
September quarter	2 343.8	1 930.6	2 096.7	22.9	234.8	1 693.9	3 031.5	968.2	419.8	6 371.1
BED OCCUPANCY RATES (%)										
2001										
September quarter	39.9	39.2	47.8	31.8	28.8	40.2	44.8	41.3	41.5	41.9
2002										
July	41.2	40.9	49.5	31.8	35.1	41.0	47.3	40.4	44.1	43.5
August	40.8	38.7	47.1	31.7	30.5	39.2	46.0	39.6	42.1	41.9
September	41.1	38.7	49.9	33.7	31.6	40.2	47.0	39.5	44.1	42.9
September quarter	41.0	39.5	48.8	32.4	32.4	40.1	46.8	39.8	43.4	42.8

(a) Comprising establishments with 15 or more rooms or units. See Explanatory Notes, paragraph 7.

5

HOTELS, MOTELS, GUEST HOUSES AND SERVICED APARTMENTS (a)—Qld *continued*

STAR GRADING

Period	Licensed hotels with facilities	Motels and guest houses	Serviced apartments	1	2	3	4	5	Ungraded	Total
GUEST ARRIVALS ('000)										
2001										
September quarter	847.1	960.5	450.8	5.4	111.9	743.0	937.2	324.2	136.7	2 258.4
2002										
July	277.3	334.2	159.7	3.9	44.5	245.8	324.1	108.8	44.2	771.2
August	284.4	315.6	154.5	3.6	38.6	233.1	327.6	109.4	42.2	754.5
September	272.7	312.6	162.8	3.7	38.6	233.8	321.9	107.1	43.0	748.2
September quarter	834.5	962.5	476.9	11.1	121.7	712.7	973.6	325.3	129.4	2 273.9
AVERAGE LENGTH OF STAY (days)										
2001										
September quarter	2.7	2.0	4.5	3.1	1.7	2.4	3.1	2.9	3.2	2.8
2002										
September quarter	2.8	2.0	4.4	2.1	1.9	2.4	3.1	3.0	3.2	2.8
TAKINGS FROM ACCOMMODATION (\$'000)										
2001										
September quarter	165 855	88 399	82 300	476	7 165	74 463	152 201	82 644	19 605	336 553
2002										
July	55 785	31 447	31 094	259	2 997	25 056	54 635	29 055	6 325	118 327
August	58 417	30 348	30 800	256	2 621	24 394	55 791	30 206	6 297	119 565
September	54 925	28 937	31 411	263	2 689	23 889	54 187	27 916	6 330	115 273
September quarter	169 127	90 732	93 306	778	8 307	73 339	164 613	87 176	18 953	353 166
AVERAGE TAKINGS PER ROOM NIGHT OCCUPIED (\$)										
2001										
September quarter	133.7	81.5	99.2	54.6	66.1	82.0	107.8	165.6	89.4	106.6
2002										
July	132.6	82.9	105.4	53.7	64.4	83.8	109.5	165.6	90.5	108.1
August	136.1	83.4	104.2	53.5	62.9	83.6	110.7	171.0	90.3	109.8
September	134.3	83.2	108.1	53.6	67.3	84.6	111.6	167.0	94.5	110.1
September quarter	134.4	83.2	105.9	53.6	64.8	84.0	110.6	167.9	91.7	109.3
AVERAGE TAKINGS PER AVAILABLE ROOM NIGHT (\$)										
2001										
September quarter	87.1	52.2	66.3	24.9	32.2	52.8	72.8	111.0	55.8	69.6
2002										
July	86.7	55.8	73.3	29.6	37.6	55.0	76.7	108.2	59.1	72.5
August	90.8	53.8	72.6	29.3	32.9	53.6	78.3	112.4	58.8	73.3
September	88.4	53.0	76.5	31.1	34.9	54.4	78.6	107.4	61.1	73.1
September quarter	88.6	54.2	74.1	30.0	35.1	54.3	77.9	109.3	59.7	73.0

(a) Comprising establishments with 15 or more rooms or units. See Explanatory Notes, paragraph 7.

STAR GRADING

Period	Licensed hotels with facilities	Motels and guest houses	Serviced apartments	1	2	3	4	5	Ungraded	Total
ESTABLISHMENTS, CAPACITY AND EMPLOYMENT (number)										
September quarter 2001										
Establishments	61	146	27	6	51	116	47	4	10	234
Guest rooms	4 078	5 231	1 293	135	1 493	4 446	2 997	1 263	268	10 602
Bed spaces	10 115	15 765	4 517	320	4 206	12 971	9 581	2 572	747	30 397
Persons employed	3 973	2 050	478	136	792	2 249	1 920	1 262	142	6 501
September quarter 2002										
Establishments	63	144	30	5	51	113	51	6	11	237
Guest rooms	4 381	5 220	1 430	121	1 498	4 167	3 357	1 571	317	11 031
Bed spaces	10 750	15 524	4 778	300	4 155	12 380	10 047	3 302	868	31 052
Persons employed	4 069	2 039	507	86	793	2 197	2 002	1 353	184	6 615
ROOM NIGHTS OCCUPIED ('000)										
2001										
September quarter	211.1	239.4	71.5	2.6	58.2	209.9	159.9	80.2	11.1	521.9
2002										
July	74.4	76.3	27.2	0.8	19.3	64.4	59.9	30.2	3.3	177.9
August	76.7	75.2	27.3	0.7	18.7	63.2	59.4	33.0	4.3	179.2
September	82.4	85.6	30.5	0.7	20.2	70.8	66.0	35.2	5.5	198.5
September quarter	233.4	237.1	85.0	2.2	58.2	198.3	185.3	98.4	13.1	555.6
ROOM OCCUPANCY RATES (%)										
2001										
September quarter	56.3	49.7	60.1	20.6	42.4	51.3	58.0	69.0	45.2	53.5
2002										
July	54.8	47.1	65.0	21.4	41.5	49.8	57.6	62.1	44.6	52.4
August	56.5	46.5	61.5	18.0	40.3	48.9	57.0	67.8	43.6	52.4
September	62.7	54.7	71.0	19.8	45.0	56.6	65.5	74.7	58.3	60.0
September quarter	57.9	49.4	65.8	19.7	42.2	51.7	60.0	68.1	49.1	54.9
GUEST NIGHTS ('000)										
2001										
September quarter	309.6	404.8	139.0	4.3	97.3	362.3	262.5	105.5	21.4	853.4
2002										
July	110.0	127.6	56.4	1.2	32.2	113.1	101.1	39.7	6.8	294.0
August	110.2	118.6	52.3	1.0	29.2	103.8	96.4	43.4	7.3	281.1
September	120.3	141.4	60.6	1.1	33.5	121.9	109.4	46.4	9.9	322.4
September quarter	340.6	387.6	169.3	3.3	94.9	338.8	306.9	129.6	24.0	897.5
BED OCCUPANCY RATES (%)										
2001										
September quarter	33.3	27.9	33.4	14.7	25.1	30.4	29.8	44.6	31.2	30.5
2002										
July	33.0	26.5	39.4	12.4	25.0	29.5	32.4	38.8	31.3	30.7
August	33.1	24.6	35.3	11.0	22.7	27.0	31.0	42.4	27.1	29.2
September	37.3	30.4	42.3	12.4	26.9	32.8	36.3	46.9	38.1	34.6
September quarter	34.4	27.1	39.0	11.9	24.8	29.7	33.2	42.6	32.2	31.5

(a) Comprising establishments with 15 or more rooms or units. See Explanatory Notes, paragraph 7.

STAR GRADING

<i>Period</i>	<i>Licensed hotels with facilities</i>	<i>Motels and guest houses</i>	<i>Serviced apartments</i>	1	2	3	4	5	<i>Ungraded</i>	<i>Total</i>
GUEST ARRIVALS ('000)										
2001										
<i>September quarter</i>	165.3	237.4	44.8	2.8	57.6	202.9	123.6	51.8	8.8	447.5
2002										
July	58.5	75.9	12.0	0.7	20.1	64.6	38.3	20.4	2.4	146.4
August	59.5	71.2	13.0	0.6	18.9	59.6	39.7	22.1	2.8	143.7
September	60.9	82.8	16.2	0.7	20.8	68.2	43.8	22.2	4.3	160.0
<i>September quarter</i>	178.9	230.0	41.2	2.0	59.7	192.4	121.9	64.7	9.5	450.1
AVERAGE LENGTH OF STAY (days)										
2001										
<i>September quarter</i>	1.9	1.7	3.1	1.5	1.7	1.8	2.1	2.0	2.4	1.9
2002										
<i>September quarter</i>	1.9	1.7	4.1	1.7	1.6	1.8	2.5	2.0	2.5	2.0
TAKINGS FROM ACCOMMODATION (\$'000)										
2001										
<i>September quarter</i>	23 498	19 926	7 019	134	3 512	16 432	18 105	11 389	871	50 442
2002										
July	8 113	6 498	2 752	39	1 192	5 202	6 549	4 124	257	17 362
August	8 446	6 339	2 683	35	1 151	5 025	6 425	4 450	382	17 467
September	9 550	7 314	3 160	35	1 265	5 742	7 402	5 042	538	20 024
<i>September quarter</i>	26 109	20 150	8 595	110	3 608	15 968	20 376	13 615	1 177	54 854
AVERAGE TAKINGS PER ROOM NIGHT OCCUPIED (\$)										
2001										
<i>September quarter</i>	111.3	83.2	98.2	52.2	60.4	78.3	113.2	142.0	78.2	96.6
2002										
July	109.1	85.2	101.1	49.2	61.8	80.8	109.3	136.4	78.0	97.6
August	110.1	84.2	98.3	52.5	61.5	79.5	108.3	134.8	89.2	97.5
September	115.9	85.4	103.7	48.3	62.6	81.1	112.2	143.2	97.1	100.9
<i>September quarter</i>	111.8	85.0	101.2	50.0	62.0	80.5	110.0	138.3	89.7	98.7
AVERAGE TAKINGS PER AVAILABLE ROOM NIGHT (\$)										
2001										
<i>September quarter</i>	62.6	41.4	59.0	10.8	25.6	40.2	65.7	98.0	35.3	51.7
2002										
July	59.7	40.2	65.7	10.5	25.7	40.3	62.9	84.7	34.8	51.1
August	62.2	39.2	60.5	9.4	24.8	38.9	61.7	91.4	38.8	51.1
September	72.7	46.7	73.7	9.6	28.2	45.9	73.5	107.0	56.6	60.5
<i>September quarter</i>	64.8	42.0	66.6	9.9	26.2	41.7	66.0	94.2	44.0	54.2

(a) Comprising establishments with 15 or more rooms or units. See Explanatory Notes, paragraph 7.

7

HOTELS, MOTELS, GUEST HOUSES AND SERVICED APARTMENTS (a)—WA

STAR GRADING

<i>Period</i>	<i>Licensed hotels with facilities</i>	<i>Motels and guest houses</i>	<i>Serviced apartments</i>	<i>1 and Ungraded</i>	<i>2</i>	<i>3</i>	<i>4</i>	<i>5</i>	<i>Total</i>
ESTABLISHMENTS, CAPACITY AND EMPLOYMENT (number)									
September quarter 2001									
Establishments	130	125	68	84	23	135	69	12	323
Guest rooms	9 492	5 669	3 882	2 816	777	7 467	5 624	2 359	19 043
Bed spaces	24 114	15 441	12 901	7 077	1 985	20 656	16 320	6 418	52 456
Persons employed	6 581	1 761	1 300	1 381	375	2 840	2 840	2 206	9 642
September quarter 2002									
Establishments	129	126	71	83	21	133	74	15	326
Guest rooms	9 473	5 604	4 229	2 658	702	7 379	5 843	2 724	19 306
Bed spaces	24 072	15 128	14 626	6 960	1 716	20 259	17 217	7 674	53 826
Persons employed	6 310	1 754	1 499	1 385	338	2 673	2 952	2 215	9 563
ROOM NIGHTS OCCUPIED ('000)									
2001									
September quarter	511.7	254.5	190.2	105.4	34.4	359.3	322.6	134.6	956.3
2002									
July	160.4	78.7	79.2	31.4	11.3	114.7	107.8	53.1	318.3
August	177.3	79.0	73.7	30.6	12.0	115.5	113.8	58.2	330.0
September	183.1	92.2	74.3	33.6	12.0	127.0	121.5	55.5	349.6
September quarter	520.8	249.9	227.2	95.6	35.3	357.2	343.1	166.8	998.0
ROOM OCCUPANCY RATES (%)									
2001									
September quarter	58.6	48.8	53.2	40.7	48.2	52.3	62.3	62.0	54.6
2002									
July	55.0	46.0	60.4	39.9	52.1	50.1	59.9	62.9	53.6
August	60.5	45.6	56.2	37.6	55.1	50.5	62.8	68.9	55.2
September	64.5	54.9	58.5	42.6	56.7	57.4	69.3	67.9	60.4
September quarter	60.0	48.8	58.4	40.0	54.6	52.6	64.0	66.6	56.4
GUEST NIGHTS ('000)									
2001									
September quarter	758.7	418.8	404.6	162.5	55.1	600.0	545.5	219.0	1 582.1
2002									
July	249.4	132.4	177.8	49.1	19.0	201.6	193.8	96.1	559.7
August	266.7	123.6	152.0	45.9	17.6	190.6	190.4	97.9	542.3
September	279.1	150.2	157.8	51.2	18.6	214.1	207.5	95.6	587.1
September quarter	795.2	406.2	487.7	146.2	55.2	606.4	591.7	289.6	1 689.1
BED OCCUPANCY RATES (%)									
2001									
September quarter	34.2	29.5	34.1	25.0	30.2	31.6	36.3	37.1	32.8
2002									
July	33.6	28.7	39.2	23.7	35.8	32.1	36.5	40.4	33.8
August	35.8	26.5	33.5	21.6	33.0	30.4	35.7	41.1	32.6
September	38.7	33.2	36.0	24.7	36.2	35.2	40.2	41.5	36.4
September quarter	36.0	29.4	36.2	23.3	35.0	32.5	37.4	41.0	34.2

(a) Comprising establishments with 15 or more rooms or units. See Explanatory Notes, paragraph 7.

7 HOTELS, MOTELS, GUEST HOUSES AND SERVICED APARTMENTS (a)—WA *continued*

STAR GRADING

Period	Licensed hotels with facilities	Motels and guest houses	Serviced apartments	1 and Ungraded	2	3	4	5	Total
GUEST ARRIVALS ('000)									
2001									
September quarter	356.7	201.2	121.1	68.6	28.0	275.5	224.7	82.2	679.0
2002									
July	118.4	60.1	48.6	21.8	8.2	87.6	76.6	32.9	227.1
August	127.2	61.7	45.5	22.5	8.4	88.7	81.1	33.7	234.4
September	134.1	75.5	51.1	25.6	8.9	102.7	89.0	34.4	260.6
September quarter	379.7	197.2	145.1	70.0	25.4	279.0	246.7	100.9	722.1
AVERAGE LENGTH OF STAY (days)									
2001									
September quarter	2.1	2.1	3.3	2.4	2.0	2.2	2.4	2.7	2.3
2002									
September quarter	2.1	2.1	3.4	2.1	2.2	2.2	2.4	2.9	2.3
TAKINGS FROM ACCOMMODATION (\$'000)									
2001									
September quarter	55 101	20 184	19 685	7 200	2 562	29 859	37 289	18 061	94 970
2002									
July	17 251	6 344	9 100	2 469	855	9 552	12 219	7 600	32 696
August	19 139	6 291	8 455	2 382	854	9 426	12 906	8 318	33 885
September	19 899	7 361	8 497	2 561	875	10 351	13 606	8 364	35 756
September quarter	56 289	19 996	26 052	7 412	2 583	29 330	38 731	24 281	102 337
AVERAGE TAKINGS PER ROOM NIGHT OCCUPIED (\$)									
2001									
September quarter	107.7	79.3	103.5	68.3	74.4	83.1	115.6	134.1	99.3
2002									
July	107.5	80.6	114.8	78.6	75.4	83.3	113.4	143.1	102.7
August	107.9	79.6	114.8	77.9	71.1	81.6	113.4	143.0	102.7
September	108.7	79.8	114.4	76.1	73.2	81.5	112.0	150.7	102.3
September quarter	108.1	80.0	114.7	77.5	73.2	82.1	112.9	145.6	102.5
AVERAGE TAKINGS PER AVAILABLE ROOM NIGHT (\$)									
2001									
September quarter	63.1	38.7	55.1	27.8	35.8	43.5	72.1	83.2	54.2
2002									
July	59.2	37.1	69.4	31.4	39.3	41.8	67.9	90.0	55.1
August	65.3	36.3	64.5	29.3	39.2	41.2	71.3	98.5	56.7
September	70.1	43.8	67.0	32.4	41.5	46.8	77.6	102.3	61.8
September quarter	64.8	39.0	67.0	31.0	40.0	43.2	72.2	96.9	57.8

(a) Comprising establishments with 15 or more rooms or units. See Explanatory Notes, paragraph 7.

STAR GRADING

<i>Period</i>	<i>Licensed hotels with facilities</i>	<i>Motels and guest houses</i>	<i>Serviced apartments</i>	<i>1 and ungraded</i>	<i>2</i>	<i>3</i>	<i>4 and 5</i>	<i>Total</i>
ESTABLISHMENTS, CAPACITY AND EMPLOYMENT (number)								
September quarter 2001								
Establishments	52	50	25	9	15	71	32	127
Guest rooms	2 847	1 671	910	211	467	2 626	2 124	5 428
Bed spaces	7 796	5 156	3 214	682	1 168	8 038	6 278	16 166
Persons employed	2 627	647	422	189	168	1 192	2 147	3 696
September quarter 2002								
Establishments	54	55	31	18	13	74	35	140
Guest rooms	2 863	1 757	1 125	513	409	2 654	2 169	5 745
Bed spaces	7 864	5 396	3 914	1 646	1 140	8 139	6 249	17 174
Persons employed	2 448	896	492	426	176	1 326	1 908	3 836
ROOM NIGHTS OCCUPIED ('000)								
2001								
<i>September quarter</i>	97.8	55.2	37.9	6.3	9.3	75.7	99.7	190.9
2002								
July	33.3	19.9	13.8	5.1	3.5	25.3	33.0	66.9
August	32.4	18.7	13.8	4.6	3.5	24.3	32.5	64.8
September	35.5	22.8	18.6	5.8	3.6	31.9	35.6	76.9
<i>September quarter</i>	101.1	61.4	46.2	15.5	10.6	81.5	101.0	208.7
ROOM OCCUPANCY RATES (%)								
2001								
<i>September quarter</i>	37.4	36.0	45.3	32.4	21.8	31.3	51.0	38.3
2002								
July	37.7	36.4	39.5	32.1	28.5	30.8	49.1	37.7
August	36.5	34.3	39.6	28.8	28.4	29.5	48.3	36.5
September	41.3	43.3	55.2	38.0	29.4	40.1	54.7	44.6
<i>September quarter</i>	38.5	38.0	44.6	32.9	28.8	33.4	50.6	39.5
GUEST NIGHTS ('000)								
2001								
<i>September quarter</i>	151.5	100.5	76.5	15.3	12.8	143.9	156.5	328.5
2002								
July	48.6	34.2	28.5	9.9	4.8	47.0	49.5	111.3
August	47.5	32.4	27.1	9.0	5.5	44.0	48.3	106.9
September	56.8	43.1	41.8	13.0	6.7	64.5	57.5	141.7
<i>September quarter</i>	152.9	109.6	97.3	31.9	17.0	155.6	155.4	359.8
BED OCCUPANCY RATES (%)								
2001								
<i>September quarter</i>	21.1	21.2	25.9	24.3	12.0	19.5	27.1	22.1
2002								
July	20.1	20.4	23.5	19.3	14.4	18.6	25.6	21.0
August	19.5	19.3	22.3	17.7	15.9	17.4	24.9	20.1
September	24.1	26.6	35.6	26.3	19.5	26.4	30.7	27.5
<i>September quarter</i>	21.2	22.1	27.0	21.1	16.6	20.8	27.0	22.8

(a) Comprising establishments with 15 or more rooms or units. See Explanatory Notes, paragraph 7.

STAR GRADING

Period	Licensed hotels with facilities	Motels and guest houses	Serviced apartments	1 and ungraded	2	3	4 and 5	Total
GUEST ARRIVALS ('000)								
2001								
September quarter	82.1	53.4	28.2	5.9	7.1	78.0	72.7	163.7
2002								
July	26.6	19.1	11.1	4.5	2.7	25.7	23.8	56.8
August	25.6	18.4	11.2	4.6	3.2	24.8	22.7	55.2
September	31.9	23.6	16.3	6.1	3.8	35.9	26.0	71.8
September quarter	84.2	61.1	38.6	15.3	9.7	86.4	72.5	183.9
AVERAGE LENGTH OF STAY (days)								
2001								
September quarter	1.8	1.9	2.7	2.6	1.8	1.8	2.2	2.0
2002								
September quarter	1.8	1.8	2.5	2.1	1.8	1.8	2.1	2.0
TAKINGS FROM ACCOMMODATION (\$'000)								
2001								
September quarter	9 170	4 595	4 161	544	490	5 836	11 056	17 926
2002								
July	2 959	1 707	1 510	406	193	1 969	3 608	6 175
August	2 911	1 623	1 467	379	200	1 839	3 583	6 001
September	3 234	1 992	1 958	514	199	2 501	3 970	7 184
September quarter	9 103	5 323	4 934	1 298	591	6 310	11 161	19 360
AVERAGE TAKINGS PER ROOM NIGHT OCCUPIED (\$)								
2001								
September quarter	93.7	83.2	109.8	86.4	52.7	77.1	110.9	93.9
2002								
July	89.0	86.0	109.7	79.3	55.7	77.8	109.4	92.3
August	90.0	86.9	106.2	82.6	56.4	75.8	110.4	92.5
September	91.1	87.3	105.1	88.0	55.1	78.4	111.6	93.4
September quarter	90.0	86.7	106.8	83.6	55.7	77.4	110.5	92.8
AVERAGE TAKINGS PER AVAILABLE ROOM NIGHT (\$)								
2001								
September quarter	35.0	30.0	49.7	28.0	11.5	24.2	56.6	35.9
2002								
July	33.5	31.3	43.3	25.5	15.9	23.9	53.7	34.8
August	32.9	29.8	42.1	23.8	16.0	22.4	53.3	33.7
September	37.6	37.8	58.0	33.4	16.2	31.4	61.0	41.7
September quarter	34.7	32.9	47.7	27.5	16.0	25.8	55.9	36.7

(a) Comprising establishments with 15 or more rooms or units. See Explanatory Notes, paragraph 7.

STAR GRADING

<i>Period</i>	<i>Licensed hotels with facilities</i>	<i>Motels and guest houses</i>	<i>Serviced apartments</i>	<i>1 and Ungraded</i>	<i>2</i>	<i>3</i>	<i>4 and 5</i>	<i>Total</i>
ESTABLISHMENTS, CAPACITY AND EMPLOYMENT (number)								
September quarter 2001								
Establishments	23	49	17	21	19	33	16	89
Guest rooms	1 943	3 164	1 151	711	773	2 489	2 285	6 258
Bed spaces	5 162	9 545	3 788	1 975	2 369	7 770	6 381	18 495
Persons employed	1 741	1 146	377	281	278	1 025	1 680	3 264
September quarter 2002								
Establishments	23	50	17	22	19	32	17	90
Guest rooms	1 946	3 231	1 131	780	773	2 460	2 295	6 308
Bed spaces	5 223	9 820	3 706	2 094	2 392	7 708	6 555	18 749
Persons employed	1 787	1 071	351	295	300	969	1 645	3 209
ROOM NIGHTS OCCUPIED ('000)								
2001								
September quarter	134.7	204.2	83.3	39.8	46.1	164.3	172.1	422.3
2002								
July	46.4	69.2	28.3	14.3	16.7	54.3	58.5	143.9
August	47.4	70.0	28.0	14.4	16.1	55.1	59.9	145.4
September	39.3	58.3	24.2	11.5	12.6	46.6	51.1	121.8
September quarter	133.1	197.6	80.5	40.2	45.4	155.9	169.6	411.1
ROOM OCCUPANCY RATES (%)								
2001								
September quarter	75.4	70.2	78.7	60.8	64.8	71.8	81.9	73.3
2002								
July	76.9	69.1	80.6	59.3	69.7	71.2	82.3	73.6
August	78.5	69.9	79.9	59.4	67.1	72.2	84.2	74.4
September	67.3	60.1	71.4	49.1	54.4	63.1	74.3	64.4
September quarter	74.3	66.5	77.4	56.0	63.9	68.9	80.3	70.8
GUEST NIGHTS ('000)								
2001								
September quarter	232.5	357.1	167.4	68.9	82.0	317.2	289.0	757.0
2002								
July	80.3	123.5	57.8	28.4	28.8	105.3	99.0	261.6
August	78.9	119.3	55.1	28.5	27.0	100.2	97.5	253.4
September	64.5	98.2	47.7	22.9	20.9	83.9	82.6	210.4
September quarter	223.7	341.0	160.6	79.9	76.8	289.5	279.2	725.4
BED OCCUPANCY RATES (%)								
2001								
September quarter	49.0	40.7	48.0	37.9	37.6	44.4	49.2	44.5
2002								
July	49.6	40.6	50.3	43.8	38.9	44.1	48.7	45.0
August	48.7	39.2	48.0	44.0	36.5	41.9	48.0	43.6
September	41.1	33.3	42.9	36.5	29.1	36.3	42.0	37.4
September quarter	46.6	37.7	47.1	41.5	34.9	40.8	46.3	42.1

(a) Comprising establishments with 15 or more rooms or units. See Explanatory Notes, paragraph 7.

STAR GRADING

<i>Period</i>	<i>Licensed hotels with facilities</i>	<i>Motels and guest houses</i>	<i>Serviced apartments</i>	<i>1 and Ungraded</i>	<i>2</i>	<i>3</i>	<i>4 and 5</i>	<i>Total</i>
GUEST ARRIVALS ('000)								
2001								
<i>September quarter</i>	129.2	206.7	56.0	30.8	53.1	170.4	137.5	391.9
2002								
<i>July</i>	41.3	70.8	17.8	10.8	17.1	61.0	41.1	129.9
<i>August</i>	42.5	68.7	17.8	12.0	15.3	58.9	42.8	129.0
<i>September</i>	34.2	55.3	15.1	8.6	11.6	48.8	35.6	104.7
<i>September quarter</i>	118.0	194.9	50.8	31.4	44.0	168.7	119.5	363.6
AVERAGE LENGTH OF STAY (days)								
2001								
<i>September quarter</i>	1.8	1.7	3.0	2.2	1.5	1.9	2.1	1.9
2002								
<i>September quarter</i>	1.9	1.8	3.2	2.5	1.7	1.7	2.3	2.0
TAKINGS FROM ACCOMMODATION (\$'000)								
2001								
<i>September quarter</i>	19 883	21 799	10 108	3 307	3 676	21 068	23 739	51 790
2002								
<i>July</i>	6 879	7 367	3 472	1 295	1 368	6 791	8 264	17 718
<i>August</i>	7 202	7 547	3 515	1 279	1 313	7 028	8 643	18 264
<i>September</i>	5 831	6 075	2 733	929	989	5 818	6 902	14 639
<i>September quarter</i>	19 912	20 989	9 720	3 503	3 670	19 637	23 810	50 620
AVERAGE TAKINGS PER ROOM NIGHT OCCUPIED (\$)								
2001								
<i>September quarter</i>	147.6	106.7	121.3	83.2	79.8	128.2	137.9	122.6
2002								
<i>July</i>	148.3	106.4	122.9	90.4	81.9	125.1	141.2	123.1
<i>August</i>	152.1	107.8	125.4	89.1	81.6	127.6	144.3	125.6
<i>September</i>	148.3	104.2	112.8	80.8	78.4	124.9	135.0	120.2
<i>September quarter</i>	149.6	106.2	120.8	87.2	80.8	125.9	140.4	123.1
AVERAGE TAKINGS PER AVAILABLE ROOM NIGHT (\$)								
2001								
<i>September quarter</i>	111.2	74.9	95.5	50.5	51.7	92.0	112.9	90.0
2002								
<i>July</i>	114.0	73.5	99.0	53.6	57.1	89.1	116.2	90.6
<i>August</i>	119.4	75.4	100.2	52.9	54.8	92.2	121.5	93.4
<i>September</i>	99.9	62.7	80.5	39.7	42.7	78.8	100.3	77.4
<i>September quarter</i>	111.2	70.6	93.4	48.8	51.6	86.8	112.8	87.2

(a) Comprising establishments with 15 or more rooms or units. See Explanatory Notes, paragraph 7.

STAR GRADING

<i>Period</i>	<i>Licensed hotels with facilities</i>	<i>Motels and guest houses</i>	<i>Serviced apartments</i>	<i>1 and ungraded</i>	<i>2</i>	<i>3</i>	<i>4 and 5</i>	<i>Total</i>
ESTABLISHMENTS, CAPACITY AND EMPLOYMENT (number)								
September quarter 2001								
Establishments	15	25	20	8	7	21	24	60
Guest rooms	1 906	1 685	1 522	367	479	1 485	2 782	5 113
Bed spaces	4 834	5 171	5 083	1 165	1 557	4 583	7 783	15 088
Persons employed	1 231	581	428	97	92	533	1 518	2 240
September quarter 2002								
Establishments	14	27	20	9	7	20	25	61
Guest rooms	1 861	1 852	1 494	464	446	1 437	2 860	5 207
Bed spaces	4 572	5 730	5 124	1 407	1 434	4 436	8 149	15 426
Persons employed	1 178	676	457	130	100	551	1 530	2 311
ROOM NIGHTS OCCUPIED ('000)								
2001								
<i>September quarter</i>	113.2	89.2	91.1	19.4	23.4	77.4	173.2	293.4
2002								
July	33.3	29.7	31.3	8.6	7.8	22.6	55.3	94.3
August	39.7	31.7	29.2	8.5	6.6	24.6	61.0	100.6
September	36.4	34.9	30.2	9.5	8.4	26.6	57.1	101.5
<i>September quarter</i>	109.4	96.2	90.7	26.5	22.8	73.7	173.4	296.4
ROOM OCCUPANCY RATES (%)								
2001								
<i>September quarter</i>	64.5	57.5	65.1	57.5	53.1	56.7	67.7	62.4
2002								
July	57.8	51.7	67.5	59.9	56.4	50.7	62.4	58.4
August	68.8	55.2	63.2	58.8	47.9	55.1	68.8	62.3
September	65.2	62.8	67.5	68.0	62.5	61.6	66.6	65.0
<i>September quarter</i>	63.9	56.5	66.0	62.1	55.5	55.7	65.9	61.9
GUEST NIGHTS ('000)								
2001								
<i>September quarter</i>	173.3	167.9	172.0	41.3	53.1	146.6	272.3	513.2
2002								
July	53.0	55.8	65.2	17.1	16.8	45.9	94.3	174.1
August	58.4	57.9	55.7	16.4	14.3	46.1	95.3	172.0
September	53.7	68.2	60.9	19.1	18.9	51.5	93.2	182.8
<i>September quarter</i>	165.1	181.9	181.9	52.6	49.9	143.5	282.9	528.9
BED OCCUPANCY RATES (%)								
2001								
<i>September quarter</i>	39.0	35.3	36.8	38.6	37.0	34.8	38.0	37.0
2002								
July	37.4	31.4	41.1	39.1	37.7	33.4	37.3	36.4
August	41.2	32.6	35.1	37.6	32.1	33.5	37.7	36.0
September	39.1	39.7	39.6	45.3	43.9	38.7	38.1	39.5
<i>September quarter</i>	39.3	34.5	38.6	40.6	37.8	35.2	37.7	37.3

(a) Comprising establishments with 15 or more rooms or units. See Explanatory Notes, paragraph 7.

STAR GRADING

<i>Period</i>	<i>Licensed hotels with facilities</i>	<i>Motels and guest houses</i>	<i>Serviced apartments</i>	<i>1 and ungraded</i>	<i>2</i>	<i>3</i>	<i>4 and 5</i>	<i>Total</i>
GUEST ARRIVALS ('000)								
2001								
<i>September quarter</i>	93.7	92.6	46.4	13.8	17.9	63.6	137.3	232.7
2002								
<i>July</i>	25.9	25.7	17.1	7.0	6.4	19.9	35.4	68.7
<i>August</i>	30.9	26.4	16.2	7.9	5.9	19.7	40.1	73.6
<i>September</i>	29.3	30.0	15.8	8.3	7.7	22.2	36.9	75.1
<i>September quarter</i>	86.1	82.1	49.1	23.2	19.9	61.7	112.5	217.3
AVERAGE LENGTH OF STAY (days)								
2001								
<i>September quarter</i>	1.8	1.8	3.7	3.0	3.0	2.3	2.0	2.2
2002								
<i>September quarter</i>	1.9	2.2	3.7	2.3	2.5	2.3	2.5	2.4
TAKINGS FROM ACCOMMODATION (\$'000)								
2001								
<i>September quarter</i>	14 700	7 469	9 877	1 600	1 567	6 409	22 470	32 045
2002								
<i>July</i>	3 979	2 479	3 616	668	488	2 106	6 812	10 075
<i>August</i>	4 985	2 620	3 395	631	442	2 228	7 700	11 001
<i>September</i>	4 481	2 891	3 514	721	536	2 436	7 193	10 886
<i>September quarter</i>	13 445	7 990	10 526	2 020	1 466	6 769	21 706	31 961
AVERAGE TAKINGS PER ROOM NIGHT OCCUPIED (\$)								
2001								
<i>September quarter</i>	129.9	83.8	108.4	82.4	66.9	82.8	129.7	109.2
2002								
<i>July</i>	119.3	83.6	115.7	77.6	62.6	93.3	123.2	106.9
<i>August</i>	125.6	82.7	116.1	74.6	66.7	90.7	126.3	109.3
<i>September</i>	123.1	82.9	116.2	76.2	64.1	91.7	125.9	107.2
<i>September quarter</i>	122.9	83.0	116.0	76.2	64.4	91.9	125.2	107.8
AVERAGE TAKINGS PER AVAILABLE ROOM NIGHT (\$)								
2001								
<i>September quarter</i>	83.8	48.2	70.5	47.4	35.6	46.9	87.8	68.1
2002								
<i>July</i>	69.0	43.2	78.1	46.5	35.3	47.3	76.8	62.4
<i>August</i>	86.4	45.6	73.3	43.8	32.0	50.0	86.8	68.2
<i>September</i>	80.3	52.0	78.4	51.8	40.0	56.5	83.8	69.7
<i>September quarter</i>	78.5	46.9	76.6	47.3	35.7	51.2	82.5	66.7

(a) Comprising establishments with 15 or more rooms or units. See Explanatory Notes, paragraph 7.

Period	South Coast	Illawarra	Sydney	Snowy Mountains	Capital Country	The Murray	Riverina	Explorer Country
ESTABLISHMENTS, CAPACITY AND EMPLOYMENT (number)								
September quarter 2001								
Establishments	81	33	296	58	68	99	68	120
Guest rooms	1 992	1 126	33 483	2 344	2 132	2 867	1 913	3 464
Bed spaces	6 098	3 516	83 068	9 362	6 209	8 863	5 636	10 561
Persons employed	617	628	21 590	808	866	921	640	1 206
September quarter 2002								
Establishments	82	32	283	59	68	98	69	121
Guest rooms	1 999	1 123	31 329	2 381	2 169	2 838	1 971	3 509
Bed spaces	6 130	3 600	77 371	9 283	6 212	8 862	5 781	10 738
Persons employed	621	603	20 095	875	960	929	643	1 244
ROOM NIGHTS OCCUPIED ('000)								
2001								
September quarter	68.2	49.8	1 970.1	120.6	100.7	114.0	96.8	173.8
2002								
July	23.3	18.4	622.8	52.7	33.7	38.1	33.0	59.6
August	21.9	18.4	646.1	55.7	31.9	38.5	30.5	54.6
September	26.4	16.6	606.5	31.9	33.8	44.4	35.8	62.7
September quarter	71.6	53.4	1 875.4	140.2	99.3	121.0	99.2	177.0
ROOM OCCUPANCY RATES (%)								
2001								
September quarter	37.2	48.1	64.0	56.3	51.4	43.2	55.0	54.5
2002								
July	37.6	52.9	64.1	71.4	50.1	43.3	53.9	54.8
August	35.3	52.8	66.7	75.5	47.4	43.8	49.9	50.2
September	44.0	49.2	64.7	44.6	51.9	52.1	60.5	59.6
September quarter	38.9	51.7	65.2	64.0	49.8	46.4	54.7	54.8
GUEST NIGHTS ('000)								
2001								
September quarter	122.5	83.4	3 278.0	345.7	186.3	208.7	154.1	310.5
2002								
July	42.6	30.9	1 036.3	163.1	62.5	70.5	55.9	110.6
August	38.5	27.9	1 068.2	167.0	56.8	68.4	47.7	92.4
September	48.5	26.9	976.8	86.3	59.8	83.4	57.4	114.0
September quarter	129.6	85.6	3 081.3	416.4	179.1	222.4	161.0	317.0
GUEST ARRIVALS ('000)								
2001								
September quarter	74.4	41.7	1 269.5	114.9	119.3	126.0	108.8	224.1
2002								
July	25.9	14.9	427.2	52.6	43.1	44.4	39.4	81.1
August	23.3	13.3	447.2	54.8	39.5	42.4	33.4	68.0
September	29.3	13.6	415.6	29.1	41.3	51.3	39.7	84.0
September quarter	78.4	41.8	1 290.0	136.6	123.9	138.1	112.5	233.1
TAKINGS FROM ACCOMMODATION (\$'000)								
2001								
September quarter	5 066	5 173	286 734	23 982	9 035	8 718	7 492	13 066
2002								
July	1 773	1 915	85 073	10 814	3 348	2 989	2 650	4 695
August	1 645	1 905	89 562	12 392	3 183	2 961	2 408	4 187
September	1 994	1 760	84 527	5 315	3 257	3 534	2 890	4 961
September quarter	5 412	5 580	259 162	28 521	9 787	9 483	7 947	13 843

Period	Hunter	North Coast NSW	Northern Rivers Tropical NSW	Big Sky Country	The Living Outback	Central Coast	Blue Mountains
ESTABLISHMENTS, CAPACITY AND EMPLOYMENT (number)							
September quarter 2001							
Establishments	100	124	76	90	38	40	33
Guest rooms	3 856	3 866	2 126	2 507	945	1 531	1 263
Bed spaces	12 028	12 384	6 625	7 513	2 807	4 991	3 560
Persons employed	2 128	1 660	632	873	287	836	976
September quarter 2002							
Establishments	102	123	76	92	38	39	32
Guest rooms	4 066	3 841	2 139	2 562	941	1 507	1 204
Bed spaces	12 600	11 965	6 719	7 638	2 709	4 856	3 329
Persons employed	2 390	1 661	676	837	273	885	945
ROOM NIGHTS OCCUPIED ('000)							
2001							
September quarter	174.8	179.5	99.1	117.7	44.8	59.2	60.3
2002							
July	69.3	63.7	35.3	38.6	15.2	20.6	21.7
August	65.5	58.1	32.6	37.2	15.0	19.6	18.3
September	68.5	66.7	34.9	41.0	16.4	22.1	17.3
September quarter	203.3	188.5	102.8	116.9	46.6	62.3	57.2
ROOM OCCUPANCY RATES (%)							
2001							
September quarter	49.3	50.5	50.7	51.0	51.5	42.1	51.9
2002							
July	55.0	53.5	53.3	48.6	52.1	44.2	58.1
August	52.0	48.8	49.2	46.9	51.5	41.9	49.0
September	56.2	57.9	54.3	53.4	58.0	48.9	47.8
September quarter	54.4	53.3	52.3	49.6	53.8	45.0	51.7
GUEST NIGHTS ('000)							
2001							
September quarter	317.9	348.9	185.8	202.9	75.4	115.6	111.5
2002							
July	130.1	130.5	67.1	68.5	25.5	42.5	42.3
August	115.0	110.4	58.5	61.3	23.5	37.9	30.9
September	123.0	137.1	66.4	73.0	28.2	42.6	31.0
September quarter	368.0	378.0	192.0	202.7	77.2	123.0	104.2
GUEST ARRIVALS ('000)							
2001							
September quarter	181.4	202.7	107.8	140.8	48.5	58.8	68.9
2002							
July	71.3	82.6	39.6	49.3	17.2	20.2	26.6
August	65.1	69.0	35.8	43.6	15.7	19.2	19.9
September	70.2	81.3	39.8	50.1	17.1	21.2	19.8
September quarter	206.5	232.9	115.3	143.0	49.9	60.5	66.4
TAKINGS FROM ACCOMMODATION (\$'000)							
2001							
September quarter	19 586	14 846	7 746	8 891	3 011	6 740	8 568
2002							
July	7 967	5 553	2 942	2 914	1 041	2 222	3 087
August	7 640	4 934	2 627	2 858	988	2 126	2 582
September	7 809	6 070	3 003	3 150	1 115	2 408	2 225
September quarter	23 417	16 557	8 572	8 923	3 144	6 756	7 894

Period	Melbourne	Wimmera	Mallee	Western	Western Grampians	Bendigo Loddon	Peninsula	Central Murray	Goulburn	High Country
ESTABLISHMENTS, CAPACITY AND EMPLOYMENT (number)										
September quarter 2001										
Establishments	235	6	41	55	20	31	21	21	27	73
Guest rooms	18 887	117	1 225	1 452	489	782	725	560	700	2 012
Bed spaces	47 117	328	3 681	4 413	1 407	2 384	1 940	1 635	2 018	7 030
Persons employed	15 951	31	482	740	214	349	369	151	369	902
September quarter 2002										
Establishments	244	6	41	53	19	30	20	23	27	73
Guest rooms	19 683	116	1 226	1 412	479	761	708	602	700	1 964
Bed spaces	49 845	333	3 673	4 348	1 370	2 286	1 879	1 701	2 008	6 887
Persons employed	15 376	30	459	718	201	353	377	172	363	808
ROOM NIGHTS OCCUPIED ('000)										
2001										
September quarter	1 150.4	4.1	51.6	59.1	19.7	37.7	22.5	20.0	30.8	76.1
2002										
July	370.6	1.2	19.4	19.4	7.4	13.2	8.3	8.1	9.4	29.5
August	400.8	1.0	17.8	17.8	6.9	11.1	8.0	7.7	10.3	30.8
September	380.0	1.2	20.4	19.6	7.3	12.8	8.2	8.4	10.7	17.6
September quarter	1 151.4	3.5	57.6	56.9	21.5	37.2	24.5	24.2	30.4	77.8
ROOM OCCUPANCY RATES (%)										
2001										
September quarter	66.2	37.8	45.7	44.2	43.8	52.5	33.7	38.9	47.8	41.1
2002										
July	60.9	34.6	51.1	44.3	50.0	56.1	37.8	43.5	43.3	49.2
August	65.8	27.3	46.9	40.8	46.2	47.1	36.6	41.5	47.5	51.4
September	64.4	35.6	55.4	46.4	50.5	56.2	38.5	46.3	51.1	30.2
September quarter	63.7	32.5	51.1	43.8	48.9	53.1	37.6	43.8	47.3	43.7
GUEST NIGHTS ('000)										
2001										
September quarter	1 867.6	6.3	86.2	110.2	30.7	64.0	38.5	34.8	47.8	201.0
2002										
July	614.4	1.9	32.6	36.8	12.2	24.0	14.6	13.5	14.1	79.4
August	647.9	1.4	28.0	31.6	11.0	18.5	12.8	12.3	14.9	81.9
September	613.5	2.0	34.7	36.3	12.0	22.5	14.1	14.1	16.3	43.0
September quarter	1 875.8	5.3	95.4	104.7	35.2	65.0	41.4	39.9	45.2	204.3
GUEST ARRIVALS ('000)										
2001										
September quarter	812.7	4.4	54.0	71.8	23.4	42.6	22.4	23.1	33.1	87.7
2002										
July	265.9	1.5	22.1	22.5	9.5	15.7	7.4	8.8	9.6	37.2
August	287.8	1.1	18.6	19.9	8.3	12.5	7.4	8.0	10.1	37.8
September	266.7	1.6	22.5	22.5	9.6	14.5	8.0	9.0	10.8	21.4
September quarter	820.3	4.3	63.2	64.9	27.4	42.6	22.8	25.8	30.5	96.4
TAKINGS FROM ACCOMMODATION (\$'000)										
2001										
September quarter	164 595	239	3 812	5 321	1 641	3 204	2 720	1 492	2 347	12 511
2002										
July	50 058	74	1 519	1 746	635	1 222	904	655	770	5 034
August	55 166	57	1 341	1 596	569	999	934	607	808	5 984
September	53 409	75	1 581	1 804	619	1 169	932	681	869	2 404
September quarter	158 633	206	4 441	5 145	1 822	3 390	2 771	1 943	2 447	13 422

Period	Lakes	Gippsland	Melbourne East	Geelong	Macedon	Spa Country	Ballarat	Central Highlands	Upper Yarra	Murray East	Phillip Island
ESTABLISHMENTS, CAPACITY AND EMPLOYMENT (number)											
September quarter 2001											
Establishments	24	34	12	22	3	5	26	14	13	13	11
Guest rooms	666	999	360	785	72	117	879	343	425	306	373
Bed spaces	1 951	2 864	873	2 133	163	286	2 742	1 081	1 095	928	1 329
Persons employed	225	302	346	374	63	111	478	89	252	69	144
September quarter 2002											
Establishments	23	34	14	23	3	5	25	15	11	15	11
Guest rooms	616	1 007	481	803	72	126	872	359	386	436	375
Bed spaces	1 784	2 884	1 197	2 189	163	327	2 718	1 157	996	1 157	1 331
Persons employed	231	320	476	412	48	131	448	98	202	113	129
ROOM NIGHTS OCCUPIED ('000)											
2001											
September quarter	16.8	31.2	11.7	31.9	2.1	6.3	35.2	11.2	11.1	10.5	9.2
2002											
July	5.2	11.4	4.7	11.7	0.8	2.2	12.4	3.8	3.5	4.3	3.1
August	5.1	11.0	4.7	11.4	0.8	1.9	11.8	3.6	3.1	4.3	2.8
September	5.8	10.7	4.6	10.6	0.8	1.8	12.9	4.7	3.8	4.9	3.6
September quarter	16.1	33.1	14.0	33.6	2.4	5.8	37.1	12.0	10.4	13.5	9.5
ROOM OCCUPANCY RATES (%)											
2001											
September quarter	27.4	34.0	35.4	44.1	32.0	58.7	43.5	35.4	28.4	37.2	26.9
2002											
July	28.2	36.4	31.5	47.0	36.2	55.4	45.8	34.0	29.3	31.8	26.3
August	27.0	35.4	31.3	45.7	37.0	48.1	43.6	32.2	25.9	31.8	24.4
September	31.7	35.4	32.2	43.9	35.1	46.6	49.3	43.2	32.8	37.6	32.2
September quarter	28.9	35.7	31.7	45.5	36.1	50.0	46.2	36.4	29.3	33.7	27.6
GUEST NIGHTS ('000)											
2001											
September quarter	29.6	46.3	17.3	50.5	2.5	9.8	72.7	21.4	17.3	18.0	24.7
2002											
July	8.8	16.4	8.0	18.3	1.0	3.7	25.6	7.6	5.9	7.0	7.3
August	8.3	15.2	7.1	16.8	0.9	3.1	21.8	7.2	5.0	6.8	6.7
September	10.4	15.1	7.0	16.8	0.9	2.9	25.7	9.6	5.9	8.7	9.0
September quarter	27.5	46.7	22.1	51.8	2.8	9.6	73.1	24.3	16.8	22.6	23.1
GUEST ARRIVALS ('000)											
2001											
September quarter	21.2	28.9	12.0	27.9	1.6	6.8	43.2	13.2	10.2	12.5	14.0
2002											
July	6.7	10.0	3.9	9.5	0.5	2.2	15.5	4.8	3.1	4.9	4.3
August	6.2	9.6	3.8	8.8	0.5	1.9	12.1	4.4	3.1	4.8	4.3
September	7.7	10.0	3.9	8.9	0.6	1.7	14.7	6.0	2.7	5.5	5.3
September quarter	20.6	29.7	11.6	27.1	1.6	5.8	42.3	15.1	8.9	15.2	13.8
TAKINGS FROM ACCOMMODATION (\$'000)											
2001											
September quarter	1 227	2 278	1 427	3 246	245	861	3 154	852	1 395	732	843
2002											
July	424	825	592	1 009	81	332	1 126	299	380	331	301
August	410	810	570	954	89	334	1 046	272	343	322	264
September	463	767	593	887	84	278	1 165	355	379	359	379
September quarter	1 296	2 402	1 754	2 850	254	944	3 336	925	1 102	1 013	944

Period	Gold Coast	Brisbane	Sunshine Coast	Hervey Bay/ Maryborough	Darling Downs	Bundaberg
ESTABLISHMENTS, CAPACITY AND EMPLOYMENT (number)						
September quarter 2001						
Establishments	147	160	97	42	64	25
Guest rooms	13 242	9 684	4 499	1 575	1 646	621
Bed spaces	43 547	26 754	15 397	5 429	5 225	1 887
Persons employed	8 569	6 684	2 212	756	617	189
September quarter 2002						
Establishments	147	159	101	44	63	27
Guest rooms	13 199	9 617	4 614	1 607	1 604	694
Bed spaces	42 639	26 712	15 766	5 489	4 996	2 188
Persons employed	8 204	6 509	2 329	717	606	243
ROOM NIGHTS OCCUPIED ('000)						
2001						
September quarter	792.0	660.1	225.1	75.0	86.9	32.9
2002						
July	263.7	231.2	84.6	25.8	27.1	13.3
August	260.0	223.9	88.2	26.9	26.4	11.8
September	259.1	208.7	93.8	26.2	32.3	11.4
September quarter	782.8	663.8	266.6	78.8	85.8	36.5
ROOM OCCUPANCY RATES (%)						
2001						
September quarter	65.0	74.1	54.4	51.7	57.4	57.6
2002						
July	64.4	77.6	59.1	51.8	54.4	61.8
August	63.5	75.1	61.7	53.9	53.1	55.1
September	65.6	72.3	67.8	54.3	67.1	54.7
September quarter	64.5	75.0	62.8	53.3	58.1	57.2
GUEST NIGHTS ('000)						
2001						
September quarter	1 853.4	1 060.5	564.1	139.8	156.5	56.7
2002						
July	606.1	369.4	208.0	49.3	46.4	24.7
August	567.7	357.4	202.8	50.7	45.0	20.7
September	593.0	328.4	229.6	52.9	57.5	20.9
September quarter	1 766.8	1 055.2	640.4	152.9	148.9	66.4
GUEST ARRIVALS ('000)						
2001						
September quarter	509.2	426.8	187.9	78.1	108.0	37.9
2002						
July	167.5	154.4	59.2	26.5	32.0	15.5
August	158.1	156.3	59.7	27.9	30.0	13.4
September	164.8	147.1	62.9	29.4	36.1	12.6
September quarter	490.4	457.8	181.8	83.8	98.1	41.6
TAKINGS FROM ACCOMMODATION (\$'000)						
2001						
September quarter	79 650	71 091	25 487	5 695	6 450	2 699
2002						
July	26 905	24 888	9 304	1 868	2 109	1 073
August	26 637	23 865	9 890	2 075	2 010	932
September	27 068	22 131	11 742	2 087	2 568	931
September quarter	80 610	70 884	30 936	6 031	6 688	2 937

Period	Fitzroy	Mackay Whitsundays (a)	Northern (a)	Tropical North Queensland	Outback	Great Barrier Reef (b)
ESTABLISHMENTS, CAPACITY AND EMPLOYMENT (number)						
September quarter 2001						
Establishments	87	51	25	48	155	51
Guest rooms	3 224	1 652	2 627	2 240	10 179	1 407
Bed spaces	10 041	4 908	9 265	6 575	30 524	3 998
Persons employed	1 636	911	2 147	1 294	5 235	547
September quarter 2002						
Establishments	85	50	28	46	159	55
Guest rooms	3 168	1 623	2 658	2 151	10 194	1 499
Bed spaces	9 559	4 648	8 998	6 241	30 480	4 279
Persons employed	1 525	879	2 333	1 305	5 790	589
ROOM NIGHTS OCCUPIED ('000)						
2001						
September quarter	177.9	90.4	124.8	142.5	672.5	75.5
2002						
July	62.7	35.6	43.9	47.7	229.4	29.5
August	60.7	31.9	46.1	46.8	237.3	28.6
September	61.0	32.3	49.2	41.8	204.9	26.4
September quarter	184.5	99.9	139.2	136.4	671.5	84.5
ROOM OCCUPANCY RATES (%)						
2001						
September quarter	60.0	59.5	51.6	69.2	71.8	58.4
2002						
July	63.9	70.8	53.3	71.6	72.6	63.5
August	61.8	63.5	56.0	70.2	75.1	61.6
September	64.2	66.4	61.7	64.8	67.0	58.6
September quarter	63.3	66.9	56.9	68.9	71.6	61.3
GUEST NIGHTS ('000)						
2001						
September quarter	305.5	150.0	274.2	238.7	1 382.9	121.5
2002						
July	103.5	57.3	102.3	76.3	493.9	46.8
August	94.3	51.2	102.9	73.2	496.6	43.8
September	102.6	54.2	115.7	66.8	417.8	41.6
September quarter	300.4	162.7	320.9	216.2	1 408.2	132.2
GUEST ARRIVALS ('000)						
2001						
September quarter	161.9	71.2	88.5	116.3	394.0	78.6
2002						
July	54.5	27.0	32.3	36.1	136.0	30.2
August	49.5	24.6	32.6	35.6	140.7	26.1
September	52.8	25.2	35.8	33.6	121.8	26.1
September quarter	156.7	76.8	100.7	105.3	398.6	82.4
TAKINGS FROM ACCOMMODATION (\$'000)						
2001						
September quarter	14 546	7 016	19 572	12 819	85 821	5 705
2002						
July	5 064	2 946	6 597	4 370	30 937	2 265
August	4 732	2 863	7 861	4 210	32 283	2 208
September	4 956	2 877	8 116	3 788	27 033	1 975
September quarter	14 752	8 687	22 573	12 368	90 253	6 448

(a) Changes in the Statistical Local Areas making up these Tourism Regions have resulted in changes to previously published figures.

(b) Includes those parts of other Tourism Regions which fall within the Great Barrier Reef geographic area. Great Barrier Reef (TR) data is not included in Queensland totals because the establishments in this Region are included in the figures for other Tourism Regions.

Period	Limestone Coast	Murray-lands	Fleurieu Peninsula	Adelaide	Adelaide Hills	Barossa	Riverland	Clare Valley	Flinders Ranges	Outback SA	Eyre Peninsula	Yorke Peninsula	Kangaroo Island
ESTABLISHMENTS, CAPACITY AND EMPLOYMENT (number)													
September quarter 2001													
Establishments	32	4	16	86	4	9	14	4	19	8	24	8	6
Guest rooms	945	96	539	5 782	132	366	499	128	647	384	768	149	167
Bed spaces	2 831	303	1 729	16 160	337	1 024	1 491	399	1 953	1 064	2 179	469	458
Persons employed	445	39	281	3 544	134	268	493	77	302	191	538	70	119
September quarter 2002													
Establishments	34	4	14	92	4	9	14	4	18	8	23	8	5
Guest rooms	981	96	497	6 262	133	368	498	126	636	383	751	149	151
Bed spaces	2 943	308	1 552	16 985	333	1 047	1 524	399	1 917	1 060	2 112	474	398
Persons employed	428	45	241	3 696	130	321	509	76	307	178	514	71	99
ROOM NIGHTS OCCUPIED ('000)													
2001													
September quarter	36.3	4.0	14.2	318.3	5.9	15.0	22.4	7.2	34.3	16.5	36.7	4.6	6.5
2002													
July	13.0	1.4	4.3	108.8	2.1	5.1	8.4	2.7	10.6	7.0	11.4	1.3	1.7
August	12.9	1.3	3.7	111.9	1.9	5.4	7.9	2.6	10.3	6.2	11.9	1.4	2.0
September	13.6	1.8	4.4	127.3	1.9	5.6	8.0	3.0	11.9	5.3	12.1	1.6	1.9
September quarter	39.5	4.5	12.4	348.1	5.9	16.1	24.3	8.3	32.8	18.5	35.4	4.3	5.6
ROOM OCCUPANCY RATES (%)													
2001													
September quarter	41.7	45.3	28.6	59.8	48.9	44.7	48.8	61.3	57.7	46.6	52.0	33.8	42.3
2002													
July	42.7	46.3	27.8	56.8	51.1	44.6	54.7	68.3	53.9	59.3	49.2	29.0	35.3
August	42.3	43.5	24.2	57.7	45.6	47.3	50.9	67.2	52.2	52.0	50.9	29.3	42.1
September	46.3	62.5	29.7	67.8	47.0	50.8	53.7	80.7	62.4	45.7	53.6	34.9	42.7
September quarter	43.7	50.6	27.2	60.7	47.9	47.5	53.1	72.0	56.1	52.4	51.2	31.0	40.0
GUEST NIGHTS ('000)													
2001													
September quarter	56.3	6.4	29.2	513.4	11.0	27.6	36.9	13.3	59.6	27.4	53.5	7.1	11.7
2002													
July	21.0	2.1	8.8	177.2	4.6	9.8	13.8	4.9	18.1	12.3	16.3	2.1	3.2
August	18.5	2.1	7.9	175.3	3.7	9.0	12.1	3.8	16.9	9.9	16.2	2.1	3.6
September	21.2	2.8	9.4	205.8	3.8	9.9	12.7	4.8	19.9	8.8	17.5	2.4	3.4
September quarter	60.7	7.0	26.1	558.2	12.0	28.7	38.6	13.5	54.8	31.0	50.0	6.6	10.3
GUEST ARRIVALS ('000)													
2001													
September quarter	36.1	4.6	18.7	223.4	6.0	18.2	24.5	9.4	41.9	18.6	35.3	4.5	6.3
2002													
July	13.4	1.4	5.1	72.7	2.0	5.0	9.0	3.0	12.2	9.2	10.6	1.4	1.5
August	11.4	1.4	4.6	75.7	2.0	5.3	7.9	2.3	11.5	7.2	11.1	1.5	1.8
September	13.8	2.0	5.3	84.1	1.9	6.2	8.0	3.1	12.7	6.8	12.8	1.6	1.7
September quarter	38.6	4.8	15.1	232.5	5.9	16.5	24.9	8.4	36.4	23.1	34.5	4.5	5.0
TAKINGS FROM ACCOMMODATION (\$'000)													
2001													
September quarter	2 678	265	1 326	34 799	625	1 464	1 518	659	2 436	1 328	2 515	292	536
2002													
July	977	94	372	11 903	225	574	578	242	748	578	826	94	151
August	931	85	313	12 160	202	611	551	221	747	506	860	90	190
September	1 035	117	365	14 376	202	599	565	260	864	443	908	100	191
September quarter	2 942	297	1 050	38 439	630	1 784	1 693	723	2 359	1 527	2 594	283	532

Period	South East	Goldfields	Midwest	Gascoyne	Pilbara	Kimberley	Perth	Peel	South West	Great Southern	Wheatbelt
ESTABLISHMENTS, CAPACITY AND EMPLOYMENT (number)											
September quarter 2001											
Establishments	10	25	25	11	19	27	99	8	57	20	22
Guest rooms	298	1 076	868	504	1 451	1 334	9 306	454	2 381	763	608
Bed spaces	907	2 828	2 348	1 347	3 085	3 900	25 526	1 500	7 253	2 267	1 495
Persons employed	124	465	377	200	473	558	5 521	158	1 247	301	218
September quarter 2002											
Establishments	10	22	25	12	18	29	98	7	61	21	23
Guest rooms	297	999	871	519	1 370	1 691	9 313	345	2 490	790	621
Bed spaces	918	2 596	2 357	1 421	2 826	4 782	26 067	1 222	7 748	2 348	1 541
Persons employed	126	403	367	219	476	712	5 333	158	1 181	305	283
ROOM NIGHTS OCCUPIED ('000)											
2001											
September quarter	11.9	53.7	42.8	27.6	71.4	83.5	509.3	14.3	92.8	26.3	22.7
2002											
July	3.0	14.4	13.7	10.6	22.6	37.7	168.0	3.8	31.3	7.2	6.1
August	3.5	14.8	15.3	10.2	23.6	38.4	177.1	3.1	29.7	7.5	6.8
September	5.0	19.5	17.4	9.1	21.3	29.9	187.9	4.1	35.4	11.5	8.5
September quarter	11.4	48.7	46.5	29.9	67.4	106.0	533.0	11.0	96.3	26.2	21.4
ROOM OCCUPANCY RATES (%)											
2001											
September quarter	43.3	54.2	53.7	59.6	53.5	68.0	59.5	34.2	42.4	37.5	40.5
2002											
July	32.1	46.4	50.8	68.2	53.2	71.9	58.6	35.5	41.5	29.3	32.7
August	37.7	47.9	56.8	65.7	55.5	73.3	61.3	29.1	38.7	30.6	35.3
September	56.1	65.2	66.8	59.2	51.7	58.8	67.2	39.9	47.7	48.5	45.6
September quarter	41.8	53.0	58.0	64.4	53.5	68.1	62.3	34.8	42.6	36.0	37.9
GUEST NIGHTS ('000)											
2001											
September quarter	18.2	74.2	72.0	48.5	88.0	152.4	840.6	31.7	183.6	41.5	31.3
2002											
July	4.6	20.8	24.0	20.4	28.7	73.2	287.5	9.9	70.0	11.9	8.6
August	5.3	20.6	24.3	16.9	30.3	69.1	288.5	7.2	59.2	11.7	9.3
September	8.2	29.7	28.2	15.1	25.8	54.1	312.3	10.5	72.4	18.5	12.2
September quarter	18.1	71.2	76.6	52.3	84.7	196.4	888.2	27.7	201.7	42.1	30.1
GUEST ARRIVALS ('000)											
2001											
September quarter	8.9	36.0	43.0	21.9	32.1	55.7	327.0	15.0	92.7	25.3	21.4
2002											
July	2.7	10.4	13.3	8.9	10.6	23.5	108.3	4.6	31.4	7.2	6.1
August	2.9	11.1	14.0	7.7	11.4	23.5	115.4	3.8	30.0	7.6	7.2
September	5.1	15.5	17.4	7.5	10.0	18.2	125.2	4.4	36.6	11.5	9.2
September quarter	10.7	37.0	44.6	24.0	32.1	65.2	348.9	12.8	98.0	26.3	22.5
TAKINGS FROM ACCOMMODATION (\$'000)											
2001											
September quarter	806	4 529	3 230	2 154	6 305	9 831	54 586	1 255	8 563	2 200	1 511
2002											
July	218	1 237	1 095	880	1 918	5 187	17 608	362	3 150	646	394
August	258	1 360	1 179	734	2 013	5 166	18 874	300	2 859	681	460
September	361	1 763	1 362	714	1 803	3 809	20 378	386	3 580	1 005	595
September quarter	838	4 360	3 636	2 328	5 734	14 162	56 860	1 048	9 589	2 332	1 449

Period	Greater Hobart	Southern (a)	East Coast (a)	Northern (a)	Greater Launceston	North West	West Coast
ESTABLISHMENTS, CAPACITY AND EMPLOYMENT (number)							
September quarter 2001							
Establishments	38	5	12	3	30	29	10
Guest rooms	2 116	144	n.p.	n.p.	1 323	895	412
Bed spaces	5 927	419	n.p.	n.p.	4 238	2 601	1 168
Persons employed	1 691	66	n.p.	n.p.	1 033	448	189
September quarter 2002							
Establishments	42	6	13	4	32	33	10
Guest rooms	2 186	155	495	119	1 414	1 005	371
Bed spaces	6 014	490	1 713	439	4 488	2 934	1 096
Persons employed	1 679	70	270	46	1 059	540	172
ROOM NIGHTS OCCUPIED ('000)							
2001							
September quarter	100.1	2.6	n.p.	n.p.	44.8	24.2	8.3
2002							
July	31.2	0.9	3.1	0.7	17.9	10.1	3.0
August	31.1	1.0	3.2	0.9	16.5	9.8	2.3
September	34.7	1.7	4.9	1.2	19.8	10.6	4.0
September quarter	97.0	3.5	11.2	2.7	54.2	30.6	9.3
ROOM OCCUPANCY RATES (%)							
2001							
September quarter	51.5	19.6	n.p.	n.p.	36.8	29.4	22.0
2002							
July	46.0	19.9	20.4	17.8	40.8	32.6	26.4
August	45.9	22.5	21.0	23.2	37.7	31.6	19.7
September	53.0	35.5	32.9	34.5	46.7	35.2	36.0
September quarter	48.3	26.2	24.7	25.1	41.6	33.1	27.3
GUEST NIGHTS ('000)							
2001							
September quarter	168.5	5.4	n.p.	n.p.	79.4	38.8	14.4
2002							
July	51.4	2.0	6.1	1.3	29.8	15.5	5.1
August	51.6	2.0	6.3	1.9	26.5	14.7	3.8
September	62.7	3.8	10.5	3.6	36.9	17.1	7.1
September quarter	165.6	7.9	22.9	6.8	93.2	47.3	16.0
GUEST ARRIVALS ('000)							
2001							
September quarter	69.3	4.2	n.p.	n.p.	43.2	23.8	8.3
2002							
July	22.5	1.6	4.1	0.9	15.4	8.9	3.4
August	22.2	1.4	4.3	1.2	14.4	9.1	2.6
September	25.5	2.8	7.4	1.9	18.9	10.8	4.6
September quarter	70.2	5.8	15.9	4.1	48.6	28.7	10.6
TAKINGS FROM ACCOMMODATION (\$'000)							
2001							
September quarter	9 980	225	n.p.	n.p.	3 964	2 220	563
2002							
July	3 095	72	260	74	1 559	876	239
August	3 094	84	289	82	1 425	846	181
September	3 479	146	415	89	1 750	984	320
September quarter	9 668	303	964	245	4 734	2 706	740

(a) Changes in the Statistical Local Areas making up these Tourism Regions have resulted in changes to previously published figures.

Period	Darwin	Kakadu	Arnhem	Katherine	Tablelands	Petermann	Alice Springs	MacDonnell	Daly	Canberra
ESTABLISHMENTS, CAPACITY AND EMPLOYMENT (number)										
September quarter 2001										
Establishments	34	4	3	10	6	7	22	2	1	60
Guest rooms	2 599	n.p.	83	528	n.p.	n.p.	1 617	n.p.	n.p.	5 113
Bed spaces	7 661	n.p.	280	1 493	n.p.	n.p.	4 844	n.p.	n.p.	15 088
Persons employed	1 419	n.p.	51	209	n.p.	n.p.	781	n.p.	n.p.	2 240
September quarter 2002										
Establishments	35	4	3	10	6	7	22	2	1	61
Guest rooms	2 652	n.p.	82	547	n.p.	n.p.	1 613	n.p.	n.p.	5 207
Bed spaces	7 802	n.p.	280	1 529	n.p.	n.p.	4 989	n.p.	n.p.	15 426
Persons employed	1 373	n.p.	59	195	n.p.	n.p.	767	n.p.	n.p.	2 311
ROOM NIGHTS OCCUPIED ('000)										
2001										
September quarter	196.8	n.p.	3.8	30.6	n.p.	n.p.	100.6	n.p.	n.p.	293.4
2002										
July	69.5	n.p.	1.3	11.6	n.p.	n.p.	31.1	n.p.	n.p.	94.3
August	69.9	n.p.	1.2	10.9	n.p.	n.p.	32.3	n.p.	n.p.	100.6
September	55.1	n.p.	1.1	8.6	n.p.	n.p.	30.2	n.p.	n.p.	101.5
September quarter	194.5	n.p.	3.5	31.1	n.p.	n.p.	93.6	n.p.	n.p.	296.4
ROOM OCCUPANCY RATES (%)										
2001										
September quarter	82.3	n.p.	49.3	63.0	n.p.	n.p.	67.6	n.p.	n.p.	62.4
2002										
July	84.6	n.p.	50.8	68.6	n.p.	n.p.	62.2	n.p.	n.p.	58.4
August	85.0	n.p.	46.1	64.3	n.p.	n.p.	64.5	n.p.	n.p.	62.3
September	69.2	n.p.	42.9	52.4	n.p.	n.p.	62.4	n.p.	n.p.	65.0
September quarter	79.7	n.p.	46.6	61.9	n.p.	n.p.	63.1	n.p.	n.p.	61.9
GUEST NIGHTS ('000)										
2001										
September quarter	333.0	n.p.	6.1	55.5	n.p.	n.p.	172.7	n.p.	n.p.	513.2
2002										
July	119.6	n.p.	2.0	20.9	n.p.	n.p.	59.6	n.p.	n.p.	174.1
August	118.8	n.p.	2.1	18.9	n.p.	n.p.	57.6	n.p.	n.p.	172.0
September	92.5	n.p.	1.8	15.1	n.p.	n.p.	54.3	n.p.	n.p.	182.8
September quarter	330.9	n.p.	5.9	55.0	n.p.	n.p.	171.5	n.p.	n.p.	528.9
GUEST ARRIVALS ('000)										
2001										
September quarter	141.0	n.p.	2.7	38.7	n.p.	n.p.	81.4	n.p.	n.p.	232.7
2002										
July	43.5	n.p.	0.9	14.9	n.p.	n.p.	27.9	n.p.	n.p.	68.7
August	45.9	n.p.	1.0	13.7	n.p.	n.p.	27.2	n.p.	n.p.	73.6
September	34.8	n.p.	0.9	10.7	n.p.	n.p.	24.1	n.p.	n.p.	75.1
September quarter	124.1	n.p.	2.8	39.2	n.p.	n.p.	79.2	n.p.	n.p.	217.3
TAKINGS FROM ACCOMMODATION (\$'000)										
2001										
September quarter	22 458	n.p.	607	2 290	n.p.	n.p.	8 448	n.p.	n.p.	32 045
2002										
July	8 305	n.p.	234	864	n.p.	n.p.	2 657	n.p.	n.p.	10 075
August	8 601	n.p.	214	805	n.p.	n.p.	2 765	n.p.	n.p.	11 001
September	6 165	n.p.	177	646	n.p.	n.p.	2 661	n.p.	n.p.	10 886
September quarter	23 070	n.p.	624	2 314	n.p.	n.p.	8 083	n.p.	n.p.	31 961

EXPLANATORY NOTES

INTRODUCTION

- 1** This publication contains data from the ABS quarterly Survey of Tourist Accommodation (STA). The STA is a mailout collection that completely enumerates all in-scope accommodation establishments.
- 2** From the March quarter 1998, the scope and collection strategy for the STA was changed to include only significant accommodation establishments (these are defined below).

SCOPE

- 3** On a quarterly basis, the STA includes hotels, resorts, motels, guest houses and serviced apartments with 15 or more rooms or units.
- 4** Every third year beginning with 2000, the STA expands to also include:
 - holiday flats, units and houses of letting entities with 15 or more rooms or units;
 - caravan parks with 40 or more powered sites;
 - visitor hostels with 25 or more bed spaces.
- 5** The short-term non-residential accommodation which is in scope of the STA is accommodation which is not leased, and which is provided to guests who would generally stay for periods of less than two months.
- 6** Some establishments also provide long-term residential accommodation. For hotels, motels, guest houses and serviced apartments, the amount of such activity is considered to be insignificant and is included in the data presented in this publication.

DEFINITIONS OF ACCOMMODATION ESTABLISHMENTS

- 7** The STA includes the following categories of establishments which provide predominantly short-term non-residential accommodation to the general public:
 - hotels and resorts with facilities - establishments with 15 or more rooms which are licensed to operate a public bar and which provide accommodation on a room/suite basis, with a bath/shower and toilet in most guest rooms, but which do not have full cooking facilities (i.e. hot plates and oven/microwave) in most guest rooms;
 - motels, private hotels and guest houses with facilities - establishments with 15 or more rooms which are not licensed to operate a public bar, and which provide accommodation on a room/suite basis, with a bath/shower and toilet in most guest rooms, but which do not have full cooking facilities (i.e. hot plates and oven/microwave) in most guest rooms;
 - serviced apartments - establishments with 15 or more units which mostly comprise self-contained units at the same location, and which are available on a unit/apartment basis to the general public for a minimum of one night; the units should have full cooking facilities (i.e. hot plates and oven/microwave), refrigerator and bath/shower and toilet facilities; all bed linen and towels should be provided, and daily servicing (i.e. cleaning and bed making) must be available through the on-site management, although this service need not necessarily be used.

EXPLANATORY NOTES *continued*

CLASSIFICATION CHANGES	<p>8 As a result of the separate classification of serviced apartments from the March quarter 1998, there have been several changes to definitions of accommodation units. Some units, which were formerly in categories such as hotels, motels or holiday flats, units and houses are now classified as serviced apartments. A small number of establishments which were previously classified as motels have been reclassified as holiday flats, units and houses and are therefore no longer in scope of the quarterly STA, except as described in paragraph 4.</p>
COVERAGE	<p>9 Coverage is comprehensive and from the September quarter 1999, is obtained from the Australian Automobile Association accommodation guide, supplied as an electronic file, which is updated twice yearly. This is supplemented by notification of new tourism developments and their likely opening dates in selected guides, major tourism journals and periodicals and newspapers. Periodic comparison with lists of accommodation establishments provided by the various tourism commissions and industry associations is also undertaken.</p>
DATA QUALITY	<p>10 The survey does not have a sample component and the data are not subject to sampling variability. However, other inaccuracies collectively referred to as non-sampling error may affect the data. These non-sampling errors may arise from a number of sources, including:</p> <ul style="list-style-type: none">■ errors in the reporting of data by respondents;■ errors in the process of capturing data;■ estimation for missing data; and■ definition and classification errors. <p>Every effort has been made to reduce non-sampling error to a minimum by careful design and testing of questionnaires, and efficient operating procedures and systems used to compile statistics.</p> <p>11 The September quarter 2002 response rates were:</p> <ul style="list-style-type: none">■ 94% licensed hotels■ 94% motels and guest houses■ 97% serviced apartments
TAKINGS FROM ACCOMMODATION	<p>12 From 1 July 2000, takings from accommodation include gross revenue from the provision of accommodation, including GST. Takings from meals are excluded. Where businesses are unable to provide the data inclusive of GST, it is automatically adjusted by the ABS prior to aggregation and release in output.</p>

EXPLANATORY NOTES *continued*

REGIONAL DATA

13 Survey results are aggregated to tourism regions as defined by relevant state and territory tourist commissions or equivalent organisations. Tourism regions are reviewed annually and are subject to boundary and name changes. Where changes have occurred care should be taken when making comparisons with previously published data at this level.

Details of the composition of tourism regions and major changes to tourism regions can be found in *Tourist Accommodation, Small Area Data* standard data service products for each state/territory (cat. no. 8635.n.40.001) issued quarterly. Outline maps of tourism regions are also provided in these small area data products.

ANNUAL CAPACITY DATA

14 ABS releases counts of accommodation establishments and their capacity as at the end of December each year in respect of the pre-1998 scope of the survey (but recognising serviced apartments separately) as follows:

- hotels, motels and guest houses and serviced apartments with facilities and having five or more rooms;
- holiday flats, units and houses (other than those included with serviced apartments) which are operated by owners, managers or real estate agents who have sole letting rights to at least five flats, units or houses for short term letting;
- all caravan parks regardless of size; and
- all visitor hostels regardless of size.

15 As a result of classification changes applied from March quarter 1998 onward, data will not be comparable with that previously published for particular accommodation types.

16 These counts are published annually in a quarterly issue of *Tourism Indicators, Australia* (cat. no. 8634.0).

STATISTICS AVAILABLE ON REQUEST

17 The ABS makes tourist accommodation data available on request, including statistics for past quarters, for specific areas and specific data items. For example, detailed employment statistics showing the number of full-time, part-time or casual employees may be available. Normally such data are made available on a fee for service basis.

RELATED PUBLICATIONS

18 Other ABS publications and products which may be of interest include:

Directory of Tourism Statistics, 2001 cat. no. 1130.0 (irregular)

Overseas Arrivals and Departures, Australia cat. no. 3401.0 (issued monthly)

Tourism Indicators, Australia cat. no. 8634.0 (issued quarterly)

Tourist Accommodation, Small Area Data cat. no. 8635.n.40.001 standard data service (SDS) products for each state/territory (except the ACT) (issued quarterly).

19 Current publications and other products released by the ABS are listed in the *Catalogue of Publications and Products* (cat. no. 1101.0). The catalogue is available from any ABS office or the ABS web site <<http://www.abs.gov.au>>. The ABS also issues a daily release advice on the web site which details products to be released in the week ahead.

EFFECTS OF ROUNDING

20 Where figures have been rounded, discrepancies may occur between totals and the sum of the component items.

GLOSSARY

Average length of stay	Average length of stay is expressed in numbers of days and calculated by dividing <i>Guest nights</i> by <i>Guest arrivals</i> .
Bed spaces	Three-quarter beds are counted as one bed space; double beds as two bed spaces. Cots are excluded.
Capacity	Capacity in terms of <i>Guest rooms/units</i> or <i>Bed spaces</i> is the maximum number available to accommodate paying guests during the survey period. Capacity closed temporarily for seasonal reasons is included.
Establishments	The number of hotels, motels and guest houses and serviced apartments within the scope of the survey which operated for any part of the survey period, or which closed temporarily for the quarter for seasonal reasons.
Guest arrivals	The total number of paying guests counted only on the first night they stayed at the accommodation establishment during the survey period.
Guest rooms	The maximum number of rooms available at each establishment during the survey period for accommodating short-term paying guests. Units and apartments within serviced apartments are treated as rooms in these survey results.
Occupancy	Occupancy in terms of <i>Room nights</i> refers to the total number of nights each guest room or unit was occupied during the survey period. Occupancy in terms of <i>Guest nights</i> refers to the total number of paying guests counted on each night they stayed at the accommodation establishment during the survey period.
Occupancy rates	<i>Occupancy rates</i> represent occupancy expressed as a percentage of total capacity available during the survey period, e.g. for the period $\text{Room occupancy rate (\%)} = \frac{\text{Room nights occupied}}{(\text{Guest rooms}) \times (\text{No. of days in the period})} \times 100$ providing that, for establishments closing (other than for seasonal reasons) or opening during the survey period, the denominator of the above expression includes only operating periods.
Persons employed	The total number of persons working at each accommodation establishment at the end of the survey period (including working proprietors and those working on other than accommodation activities).
Room nights available	The number of guest rooms/units available multiplied by the number of days for which they were available during the survey period. For establishments closing (other than for seasonal reasons) or opening during this period, operating periods only are included.

Star grading The grading of hotels, motels and guest houses with facilities and serviced apartments based on the classification system used by members of the Australian Automobile Association (AAA). The gradings are allocated according to a points system based on the amenities and facilities available to guests. Details of the grading scheme are contained in the RACV-RAASA members' publication *Accommodation Australia*, or the individual tour guides produced by members of the AAA. For the purpose of classifying establishments to a star grading in this publication, 'half' star gradings are ignored (e.g. a two and a half star grading has been shown as two star).

From the September quarter 1999, some (very few) large establishments not star graded by the AAA have been allocated a star grade by the ABS for Survey of Tourist Accommodation statistical tabulation purposes.

Takings from accommodation Since 1 July 2001, takings from accommodation include gross revenue from the provision of accommodation, including GST. Takings from meals are excluded. In cases where takings from accommodation data cannot be provided inclusive of GST the amount of GST payable is estimated and the data revised accordingly.

Prior to 1 July 2001, takings from accommodation for some jurisdictions included bed taxes. From 1 July bed taxes were abolished being replaced by GST. Takings from accommodation for each month generally represent the takings received during that month. Where payments are received in advance of, or after, the provision of accommodation to guests, the monthly figure for takings from accommodation may not necessarily bear a direct relationship to the number of guests accommodated during the month.

FOR MORE INFORMATION...

- INTERNET* **www.abs.gov.au** the ABS web site is the best place to start for access to summary data from our latest publications, information about the ABS, advice about upcoming releases, our catalogue, and Australia Now—a statistical profile.
- LIBRARY* A range of ABS publications is available from public and tertiary libraries Australia-wide. Contact your nearest library to determine whether it has the ABS statistics you require, or visit our web site for a list of libraries.
- CPI INFOLINE* For current and historical Consumer Price Index data, call 1902 981 074 (call cost 77c per minute).
- DIAL-A-STATISTIC* For the latest figures for National Accounts, Balance of Payments, Labour Force, Average Weekly Earnings, Estimated Resident Population and the Consumer Price Index call 1900 986 400 (call cost 77c per minute).

INFORMATION SERVICE

Data which have been published and can be provided within five minutes are free of charge. Our information consultants can also help you to access the full range of ABS information—ABS user-pays services can be tailored to your needs, time frame and budget. Publications may be purchased. Specialists are on hand to help you with analytical or methodological advice.

- PHONE* **1300 135 070**
- EMAIL* **client.services@abs.gov.au**
- FAX* 1300 135 211
- POST* Client Services, ABS, GPO Box 796, Sydney 2001

WHY NOT SUBSCRIBE?

ABS subscription services provide regular, convenient and prompt deliveries of ABS publications and products as they are released. Email delivery of monthly and quarterly publications is available.

- PHONE* 1300 366 323
- EMAIL* subscriptions@abs.gov.au
- FAX* 03 9615 7848
- POST* Subscription Services, ABS, GPO Box 2796Y, Melbourne 3001



2863500009021
ISSN 1031-0770

RRP \$22.00

© Commonwealth of Australia 2002

Produced by the Australian Bureau of Statistics